

# Rankin-1

## HDT STATIC-DYNAMIC-TRACE

Company	BOC of Australia
Well	Rankin 1
Field	Wildcat
Country	Australia
State	Western Australia
Latitude	019 49' 09.600" S DMS
Longitude	115 46' 50.000" E DMS
Permanent Datum	MISLW
Elevation	9.45 M
Elevation R.T.	9.45 M
Elevations G.L.	0.00 M
Elev. Log Zero	9.45 M
Log Measured From	RT
Drill Measured From	RT
Other Services	L7 IES ML-MLL
Other Services Ln 1	BHC-GR
Other Services Ln 2	SNP-GR
Other Services Ln 3	CST
Other Services Ln 4	FIT
Service company	Schlumberger
Number of runs	4
Date Plotted	Tuesday, 1 November 2016
Time Plotted	3:51:52 PM

## Run Information

Run Number	4							
Date	22/9/1971							
Depth Driller	4110.53 M							
Depth Logger	4110.23 M							
First Reading	4110.23 M							
Last Reading	3444.24 M							
Casing Driller	2905.66 M							
Casing Logger	2905.66 M							
Casing Size	9.625 INCH							
Casing Depth	2905.66 M							
Bit Size	8.500 INCH							
Hole Fluid Type	Dextrid-Q Mix							
Density	10.100 LB/G							
Viscosity	50.00 SEC							
pH	10.2							
Fluid Loss	4.80 C3							
Sample Source	Flowline							
Rm @ Measured Temperature	0.183 OHMM							
Mud temp @ Surface	43.33 DEGC							
Rmf @ Measured Temperature	0.172 OHMM							
MF temp @ Surface	25.56 DEGC							
RMC @ Measured Temperature	0.490 OHMM							
MC temp @ Surface	25.56 DEGC							
Source Rmf	Measured							
Source Rmc	Measured							
Rm @ BHT	0.075 OHMM							
Rm temp @ Bottom	126.67 DEGC							
Surface hole temp	25.56 DEGC							
Bottom Hole Temperature	128.89 DEGC							
Surface temperature	25.56 DEGC							
Maximum Recorded Temperatu	128.89 DEGC							
Equipment No.	1048							
Base Location	OAW							
Recorded By	M Head R Trew							
Witnessed By	R Hartley							

=====

HARVEY ROCK PHYSICS HAS TRANSCRIBED TAPE AND CALIBRATED DATA USING FIELD PRINT  
 DEPTH MATCHING TO NEAREST 6 inches BASED ON CALIPERS AND MATCHING LOG CHARACTER TO 1:200 PRINT  
 HDT DATA TRANSCRIBED FROM 1 7 TRACK TTR TAPES WITH DEPTH RANGES  
 11300-13486  
 CALIPERS RESCALED USING 6-16 INCHSCALE RANGE  
 HOLE AZIMUTH COMPUTED FROM PAD ONE AZIMUTH AND RB  
 Gamma Ray merged in from Woodside corporate data set. Is on depth

=====

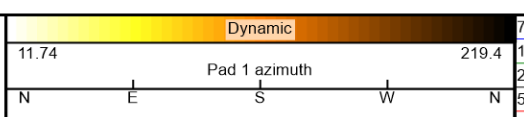
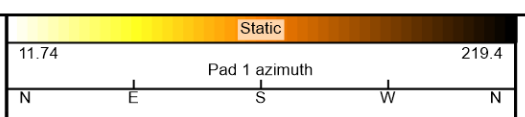
Since well log interpretations are opinions based upon inferences from well logs, we cannot and do not guarantee the correctness or accuracy of any interpretation. Therefore we shall not be liable or responsible for any loss, damage, cost or expense incurred or sustained by anyone resulting from any interpretation.

## Log Description

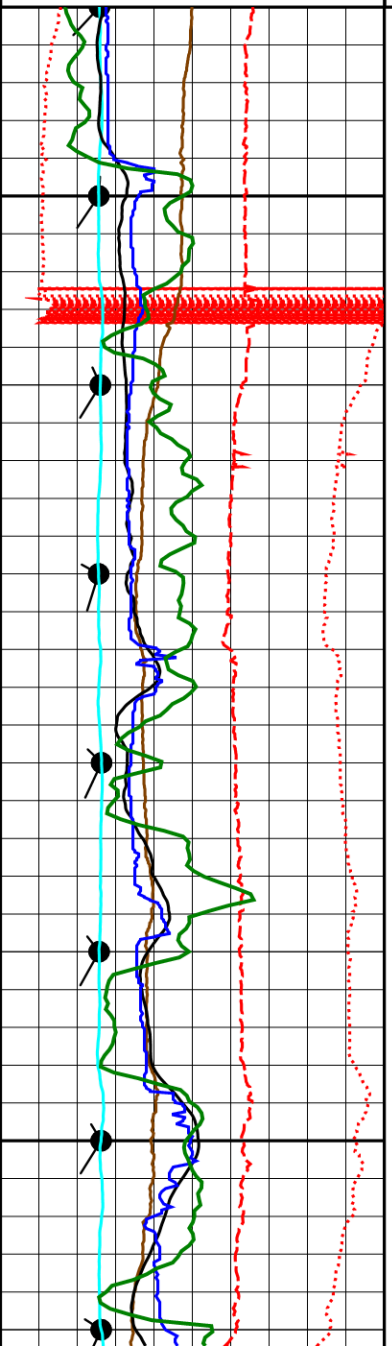
P1AZ            Pad 1 Azimuth  
 RB             Relative Bearing

HAZI	Hole Azimuth
DEVI	Deviation
C13	Raw caliper 1
C24	Raw caliper 2
GR	Gamma-Ray Log
DB3	Resistivity button pad 3
DB4	Resistivity button pad 4
DB1	Resistivity button pad 1
DB2	Resistivity button pad 2

-40.0	P1AZ (DEG)	360.0	DEPTH
-40.0	RB (DEG)	360.0	M
-40.0	HAZI (DEG)	360.0	1:200
-1.0	DEVI	9.0	
6.0	C13	16.0	
6.0	C24	16.0	
0.0	GR (GAPI)	200.0	
-1.00	Devi-Hazi	9.00	

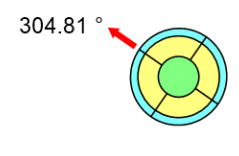
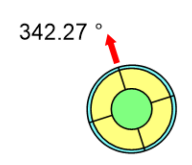
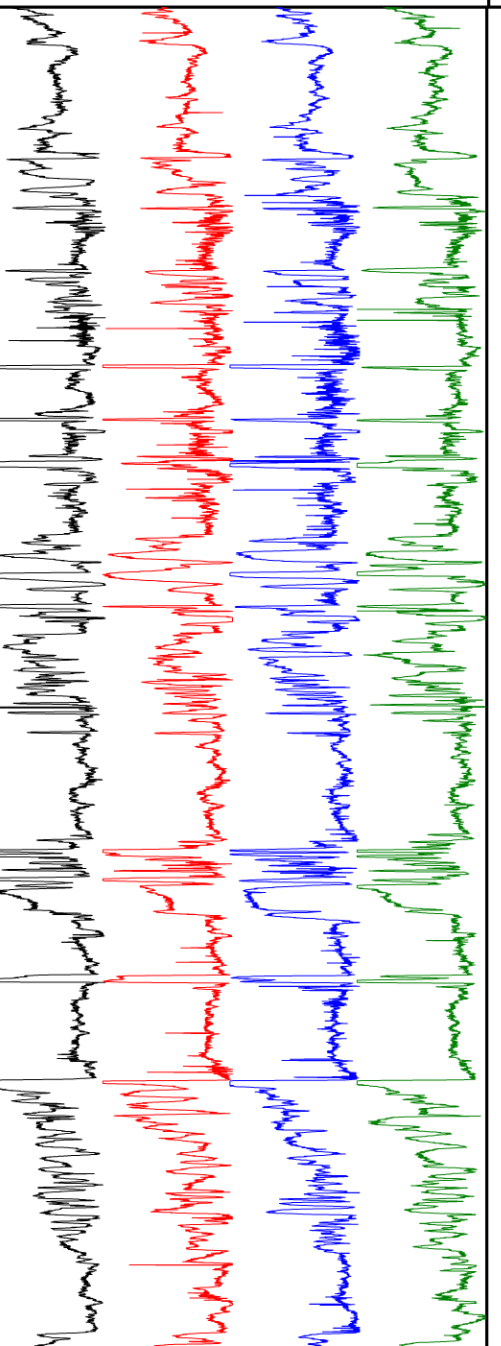
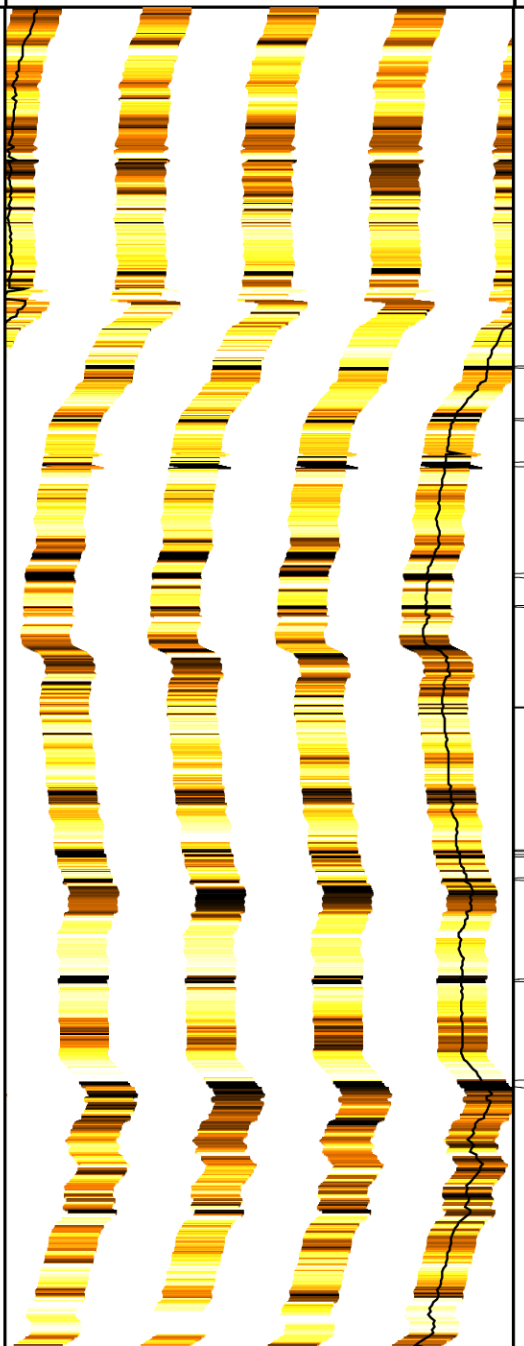
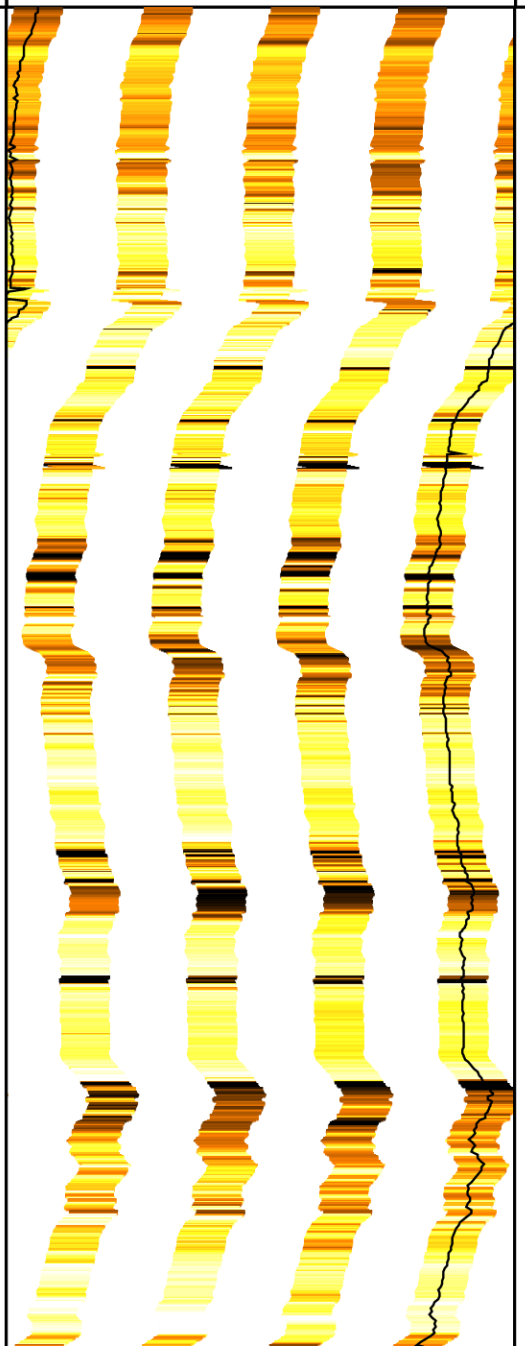


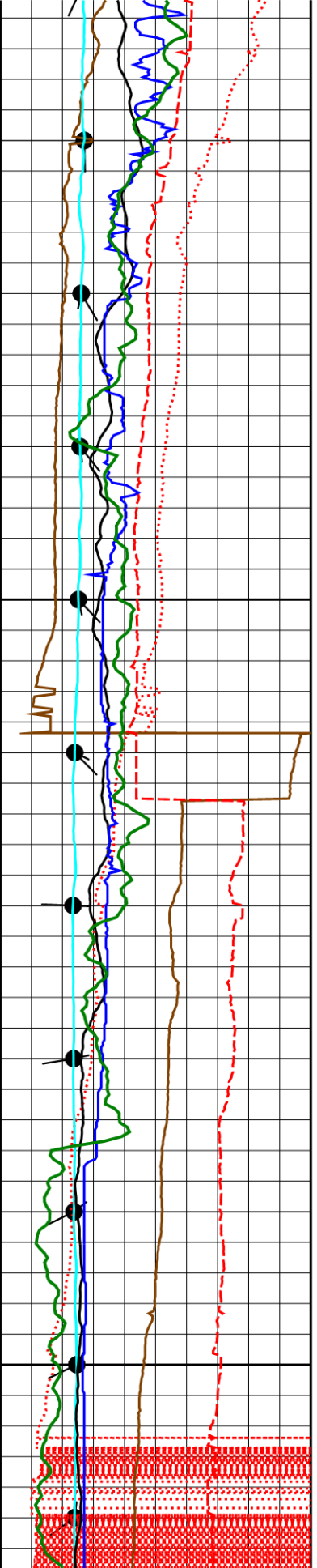
750.0	DB3	-250.0
1000.0	DB4	0.0
250.0	DB1	-750.0
500.0	DB2	-500.0



3450

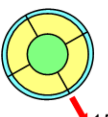
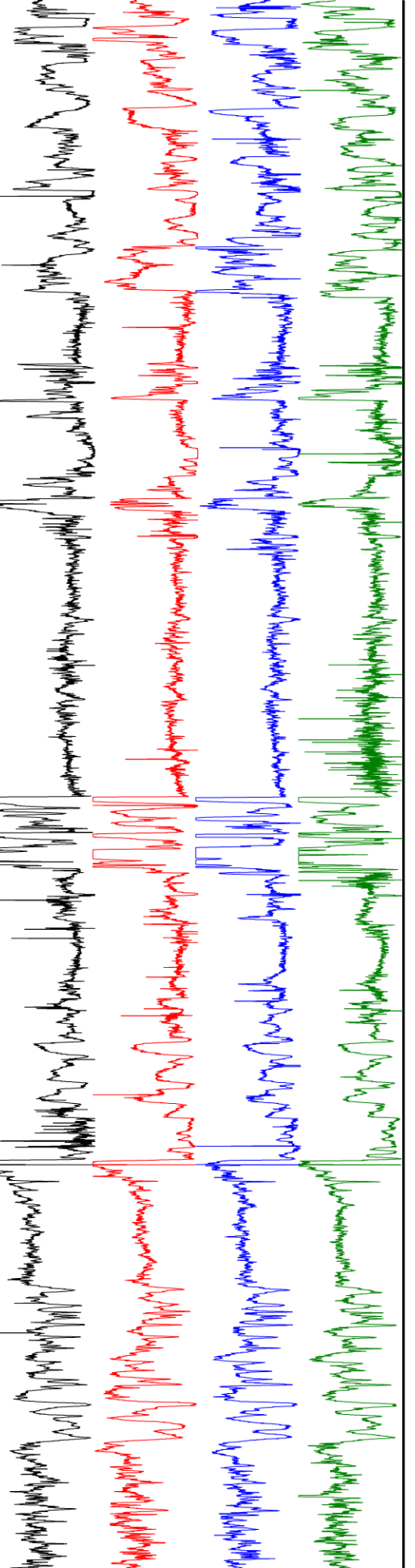
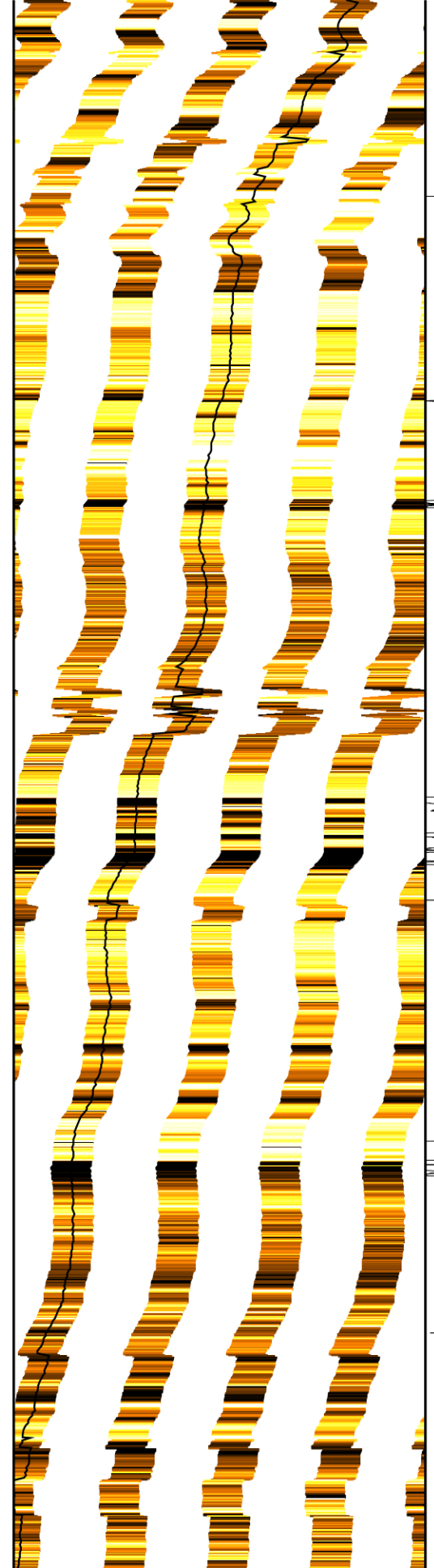
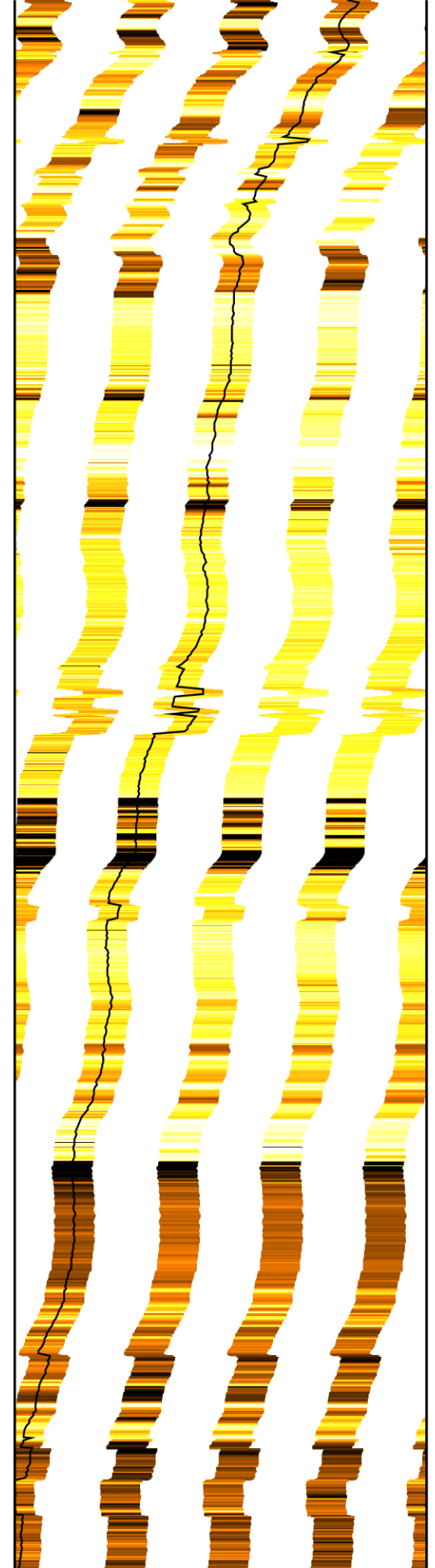
3475



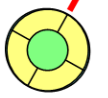


3500

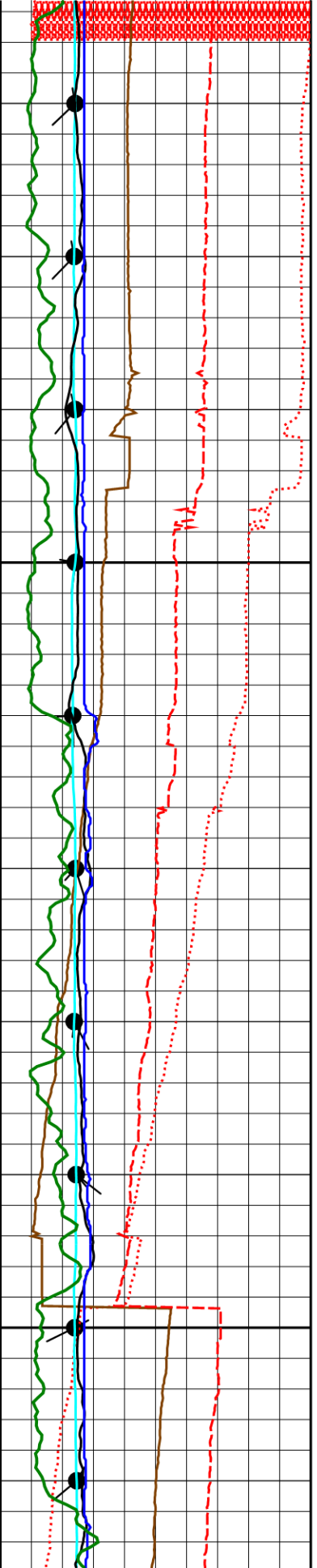
3525



15

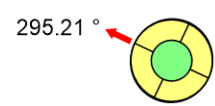
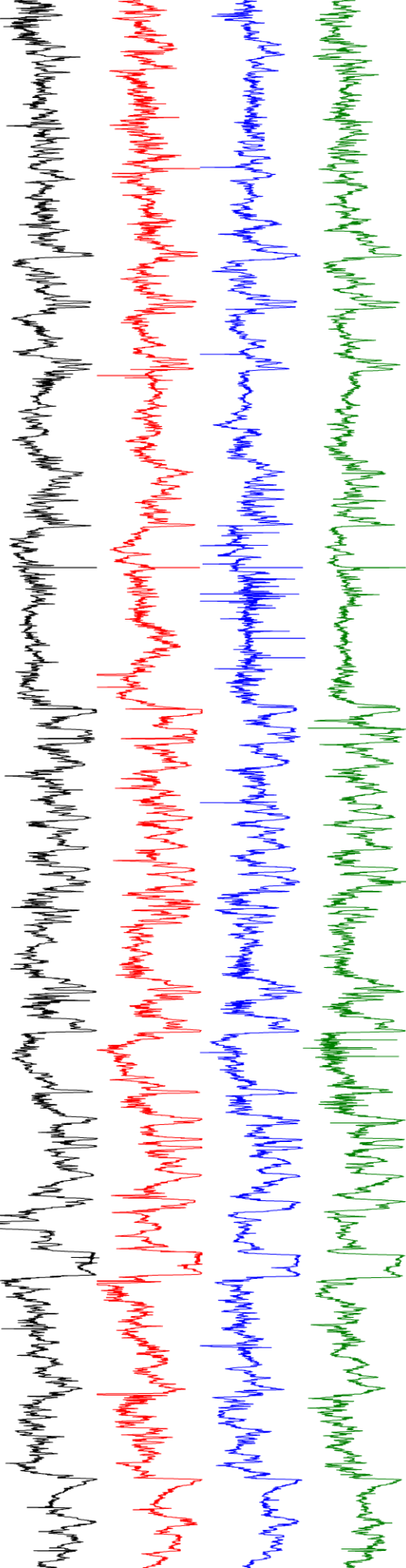
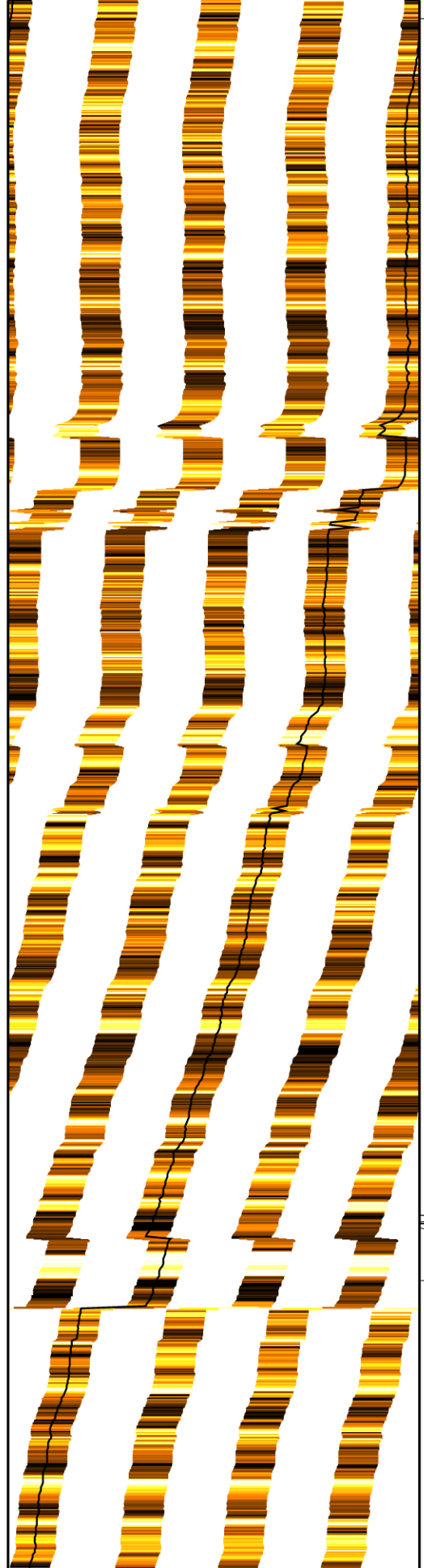
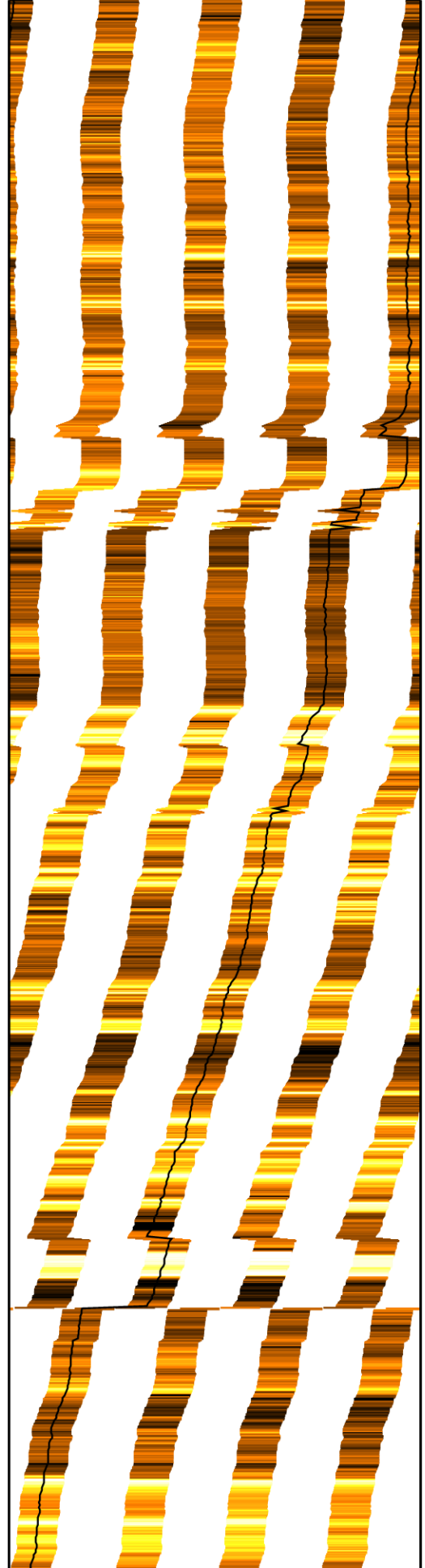


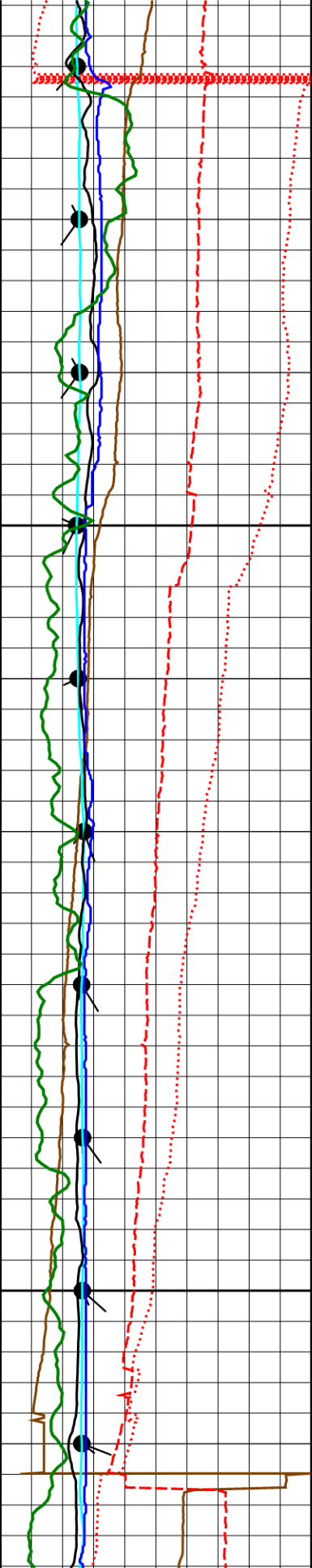
29



3550

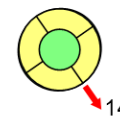
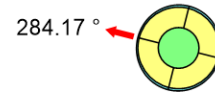
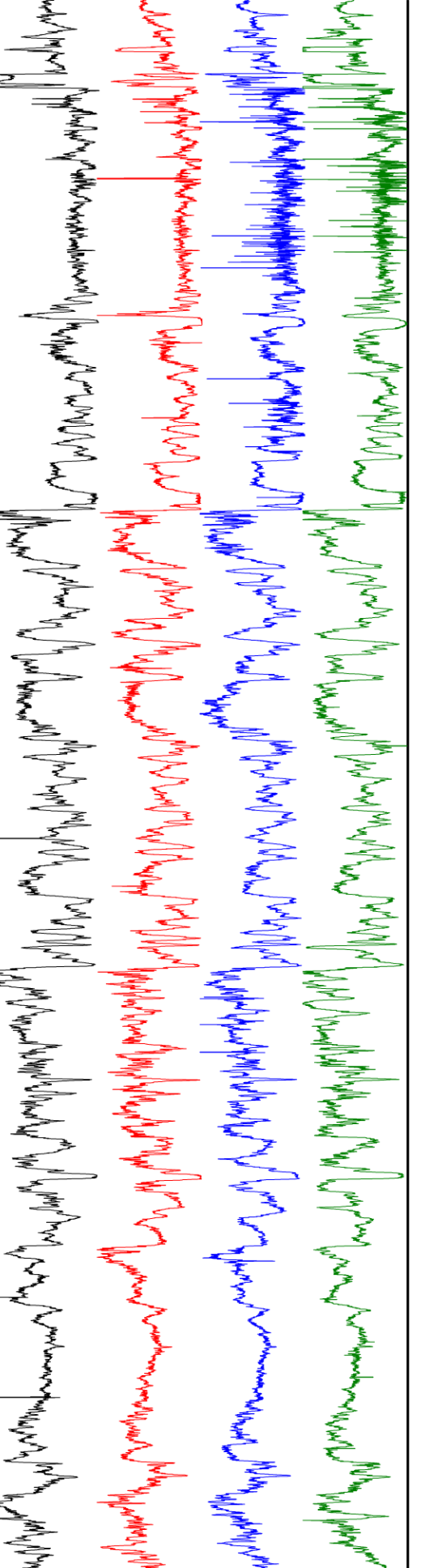
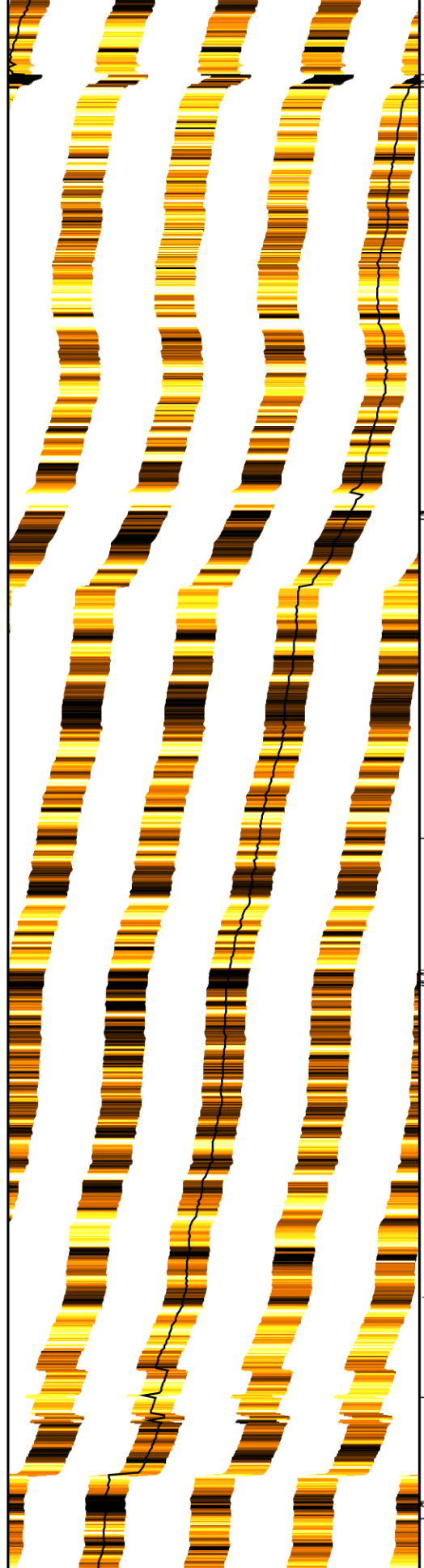
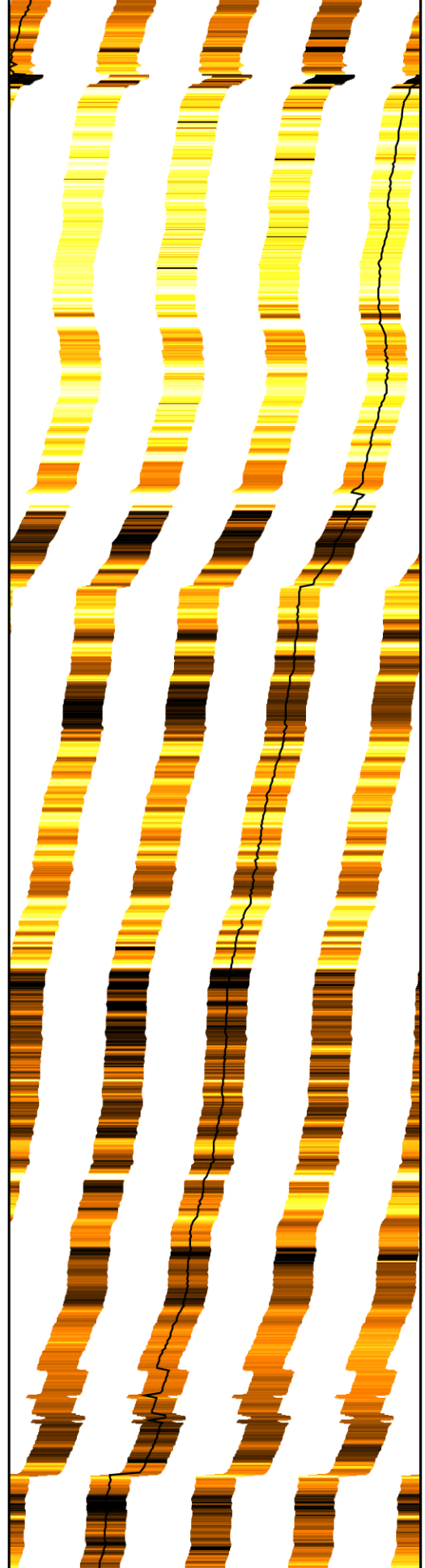
3575

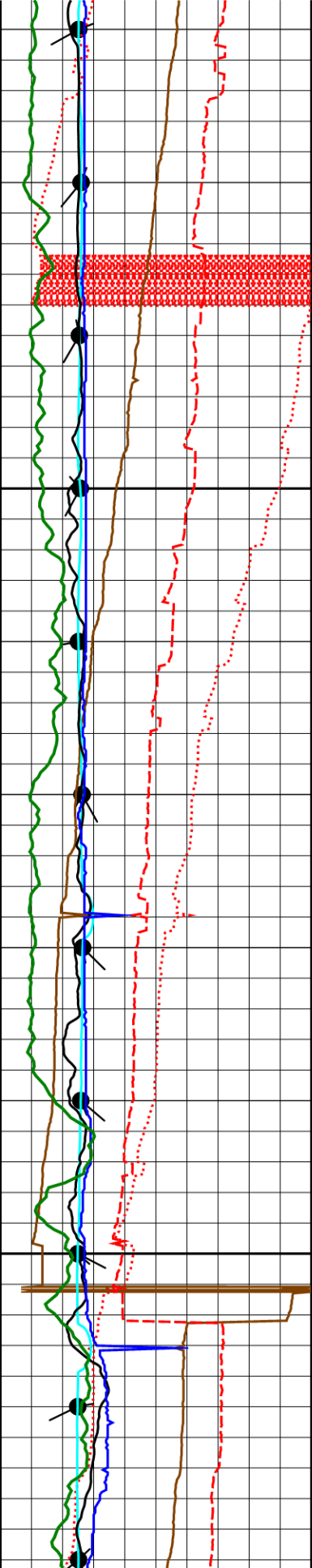




3600

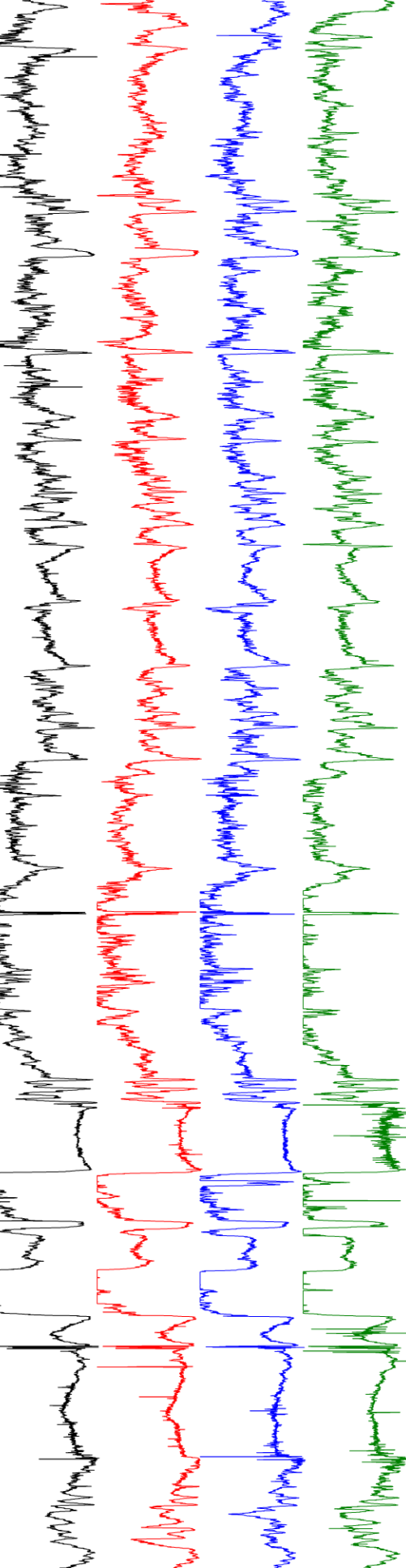
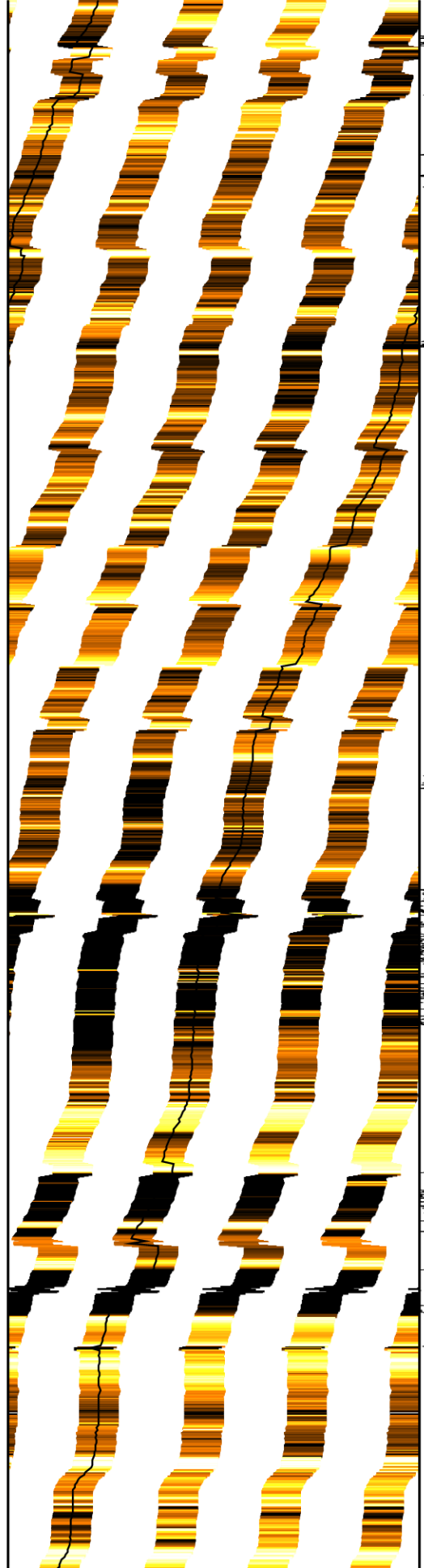
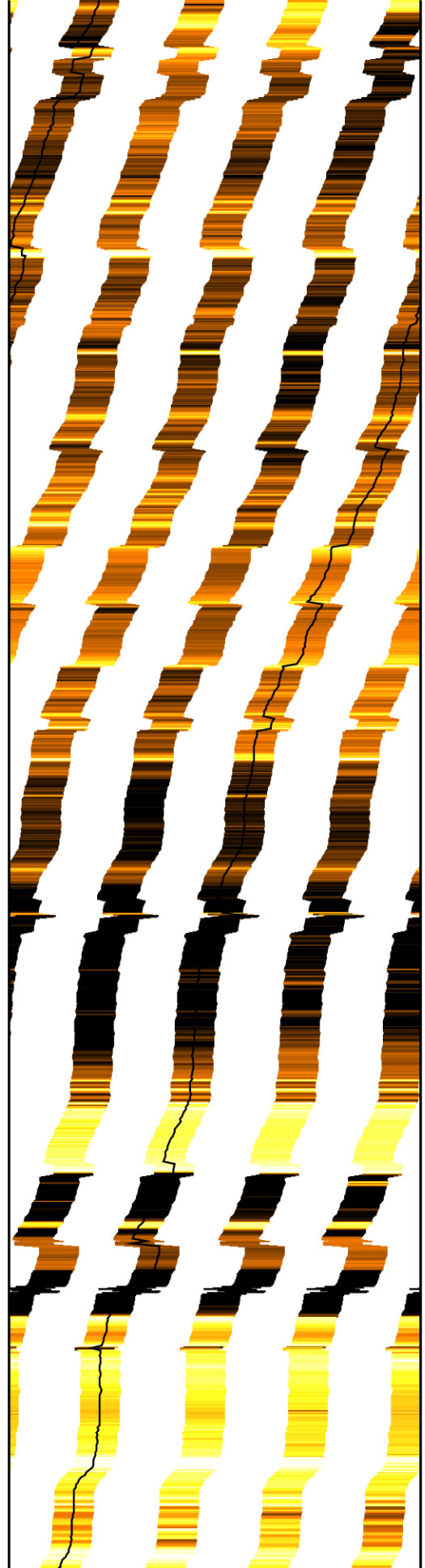
3625





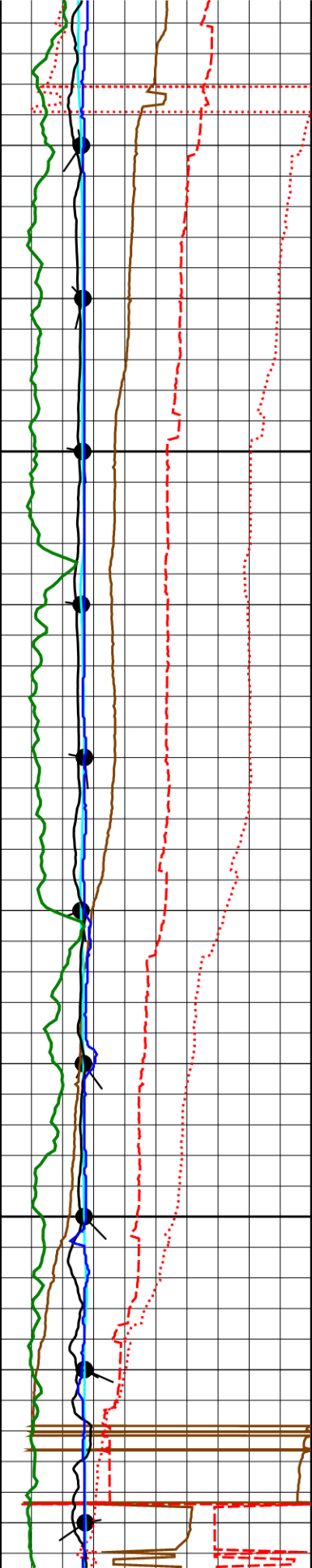
3650

3675



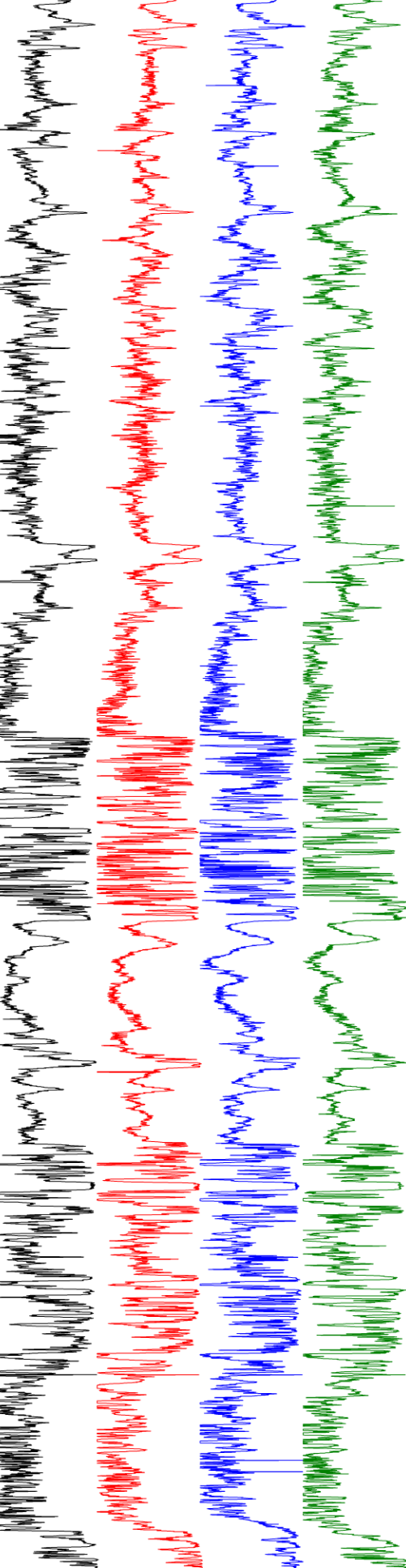
306.78°



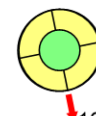
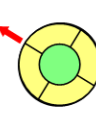


3700

3725

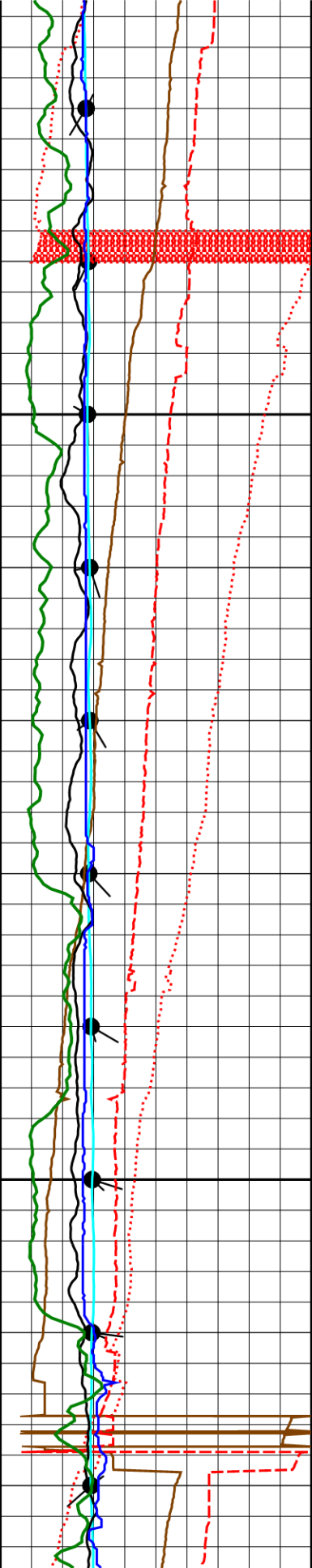


301.51°



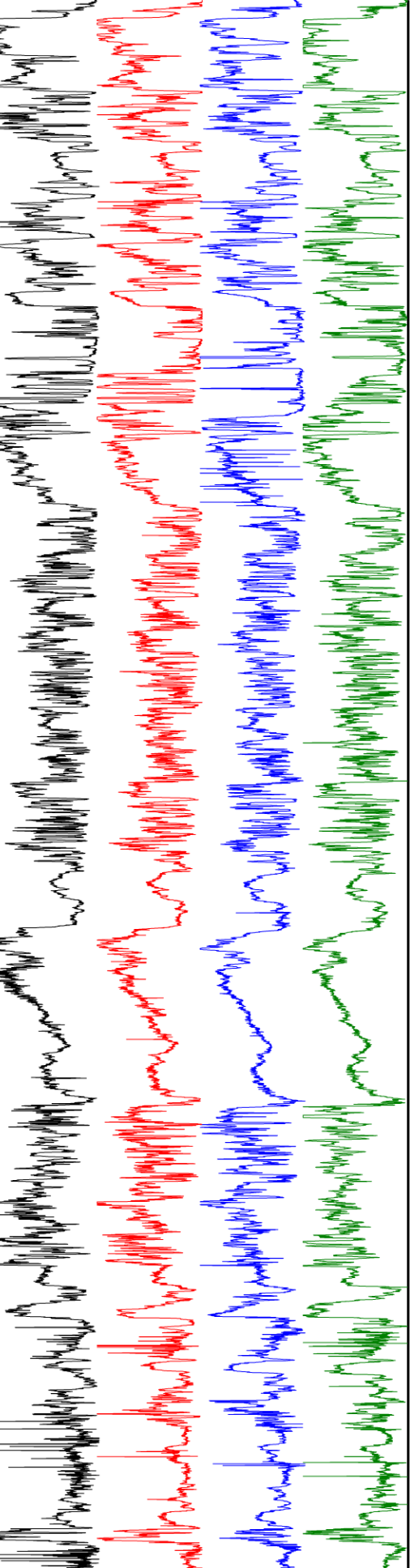
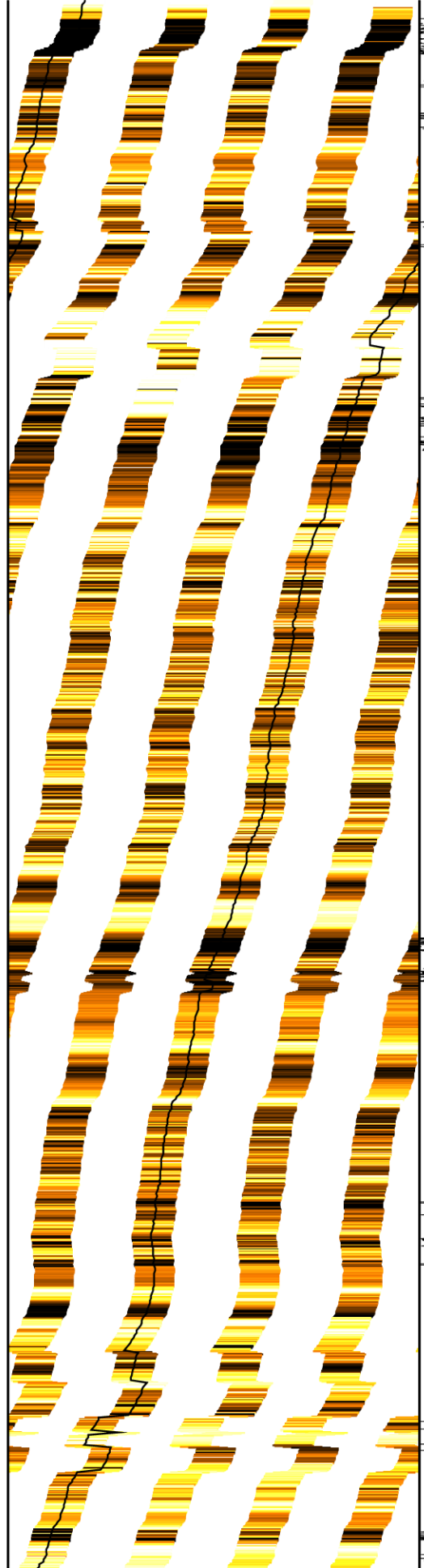
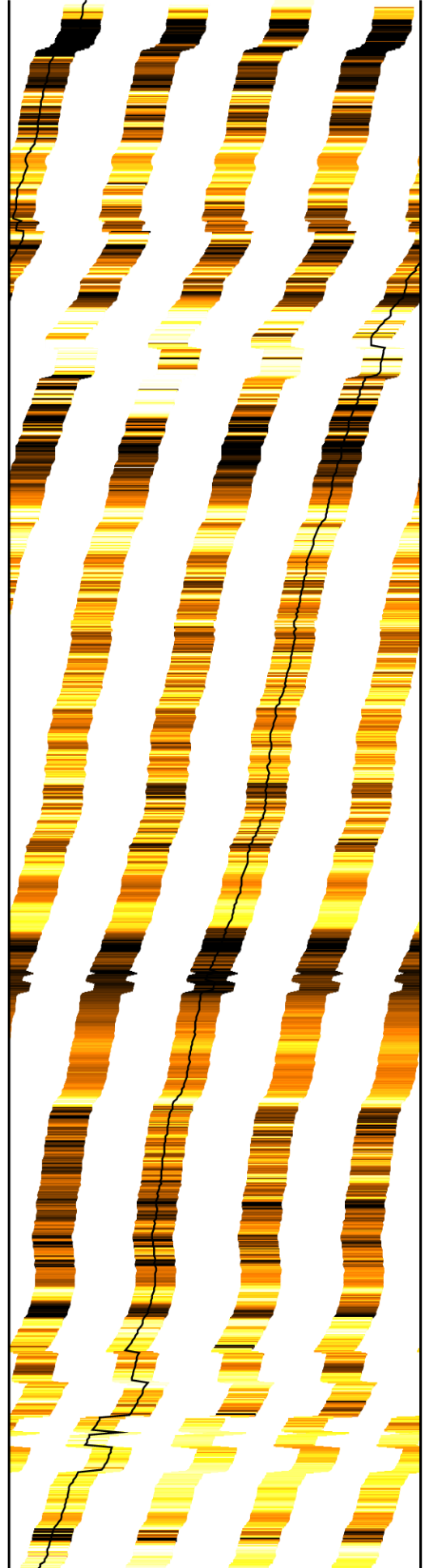
168.6



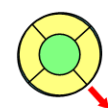
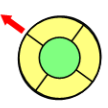


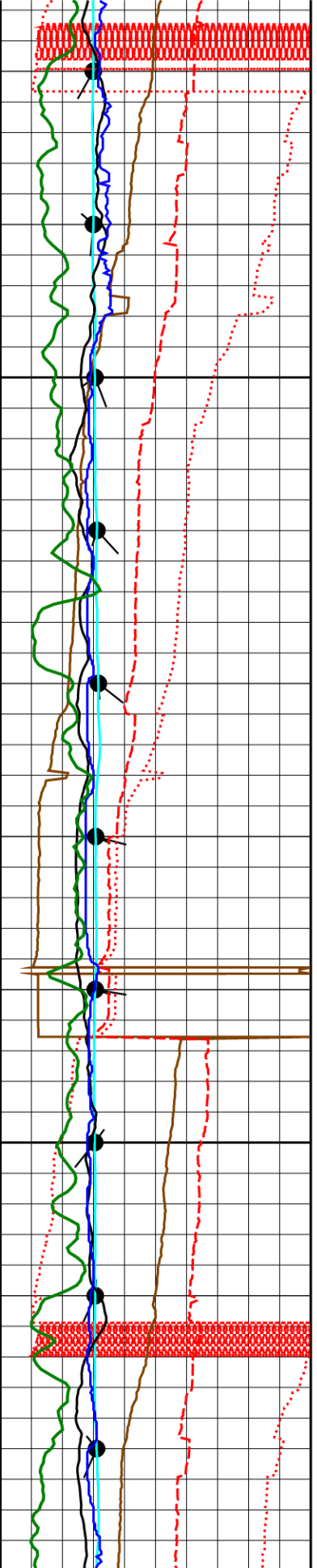
3750

3775



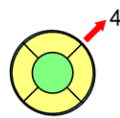
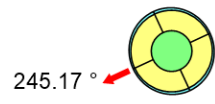
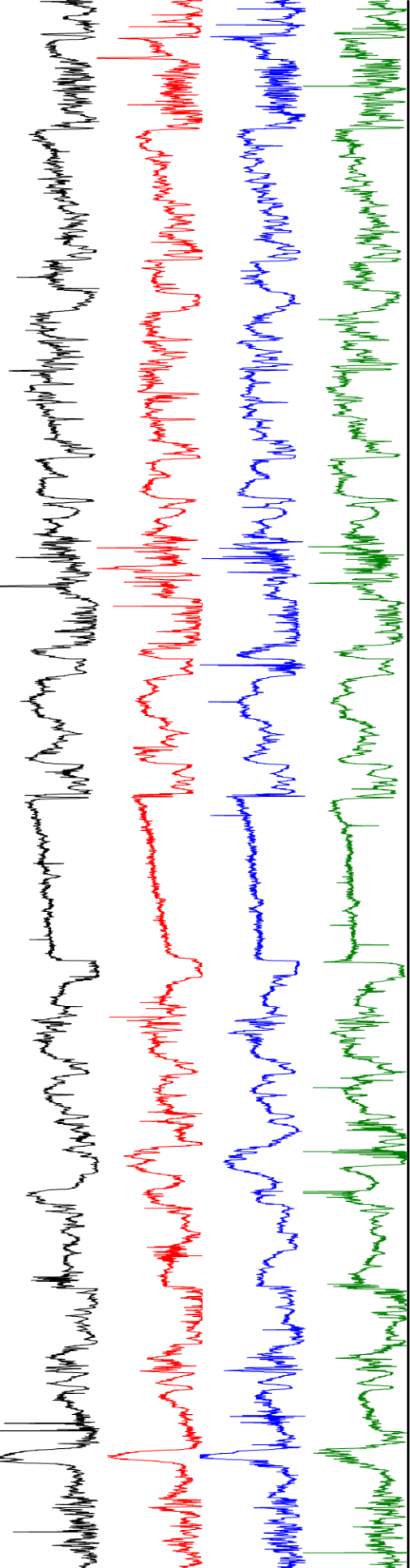
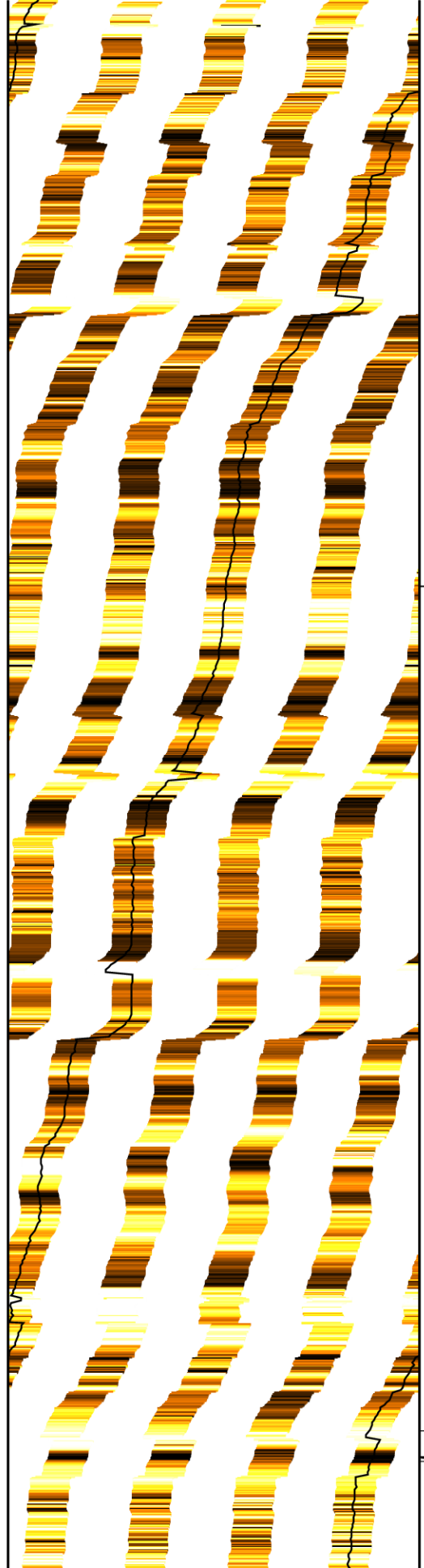
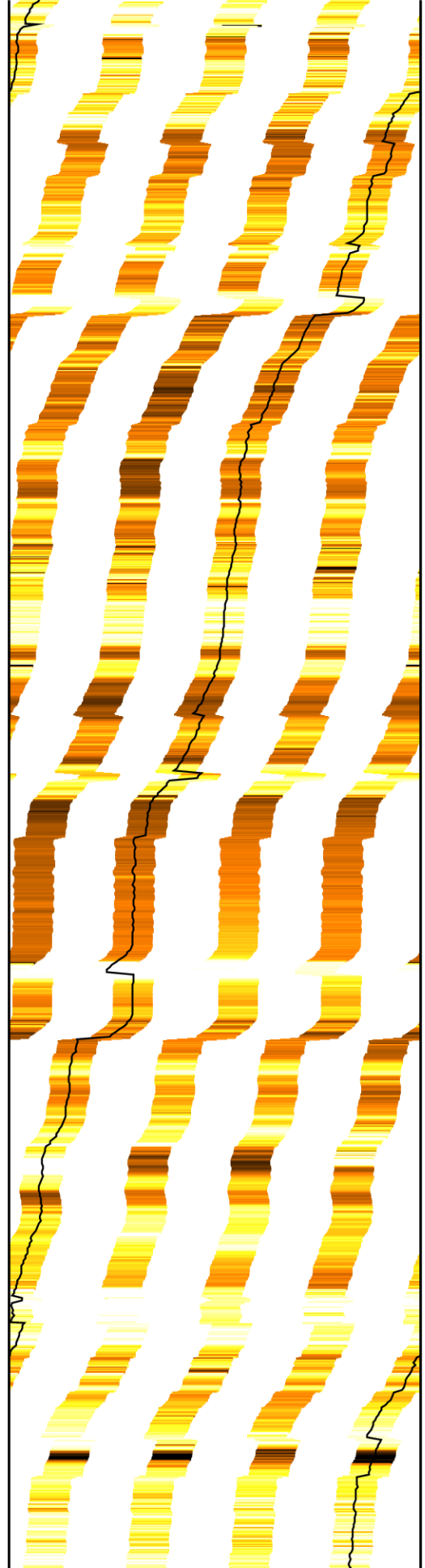
306.11°

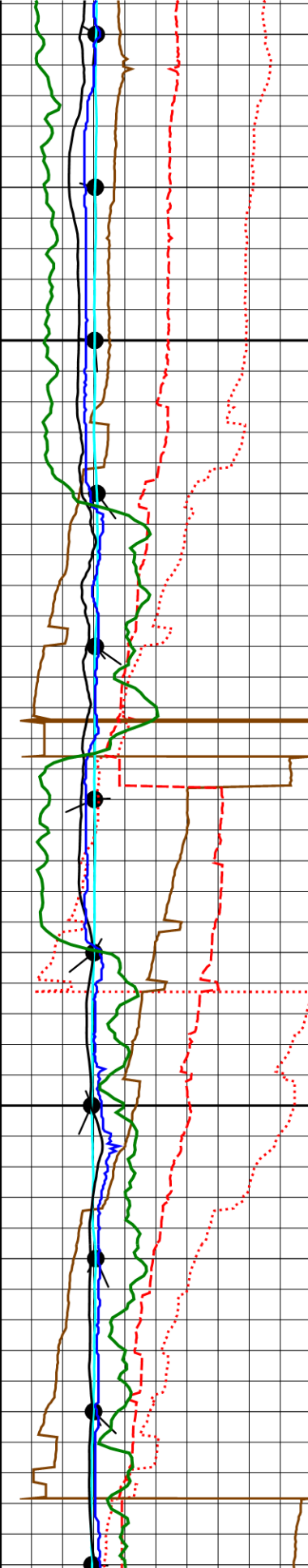




3800

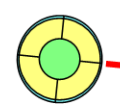
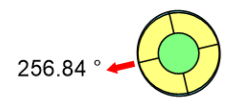
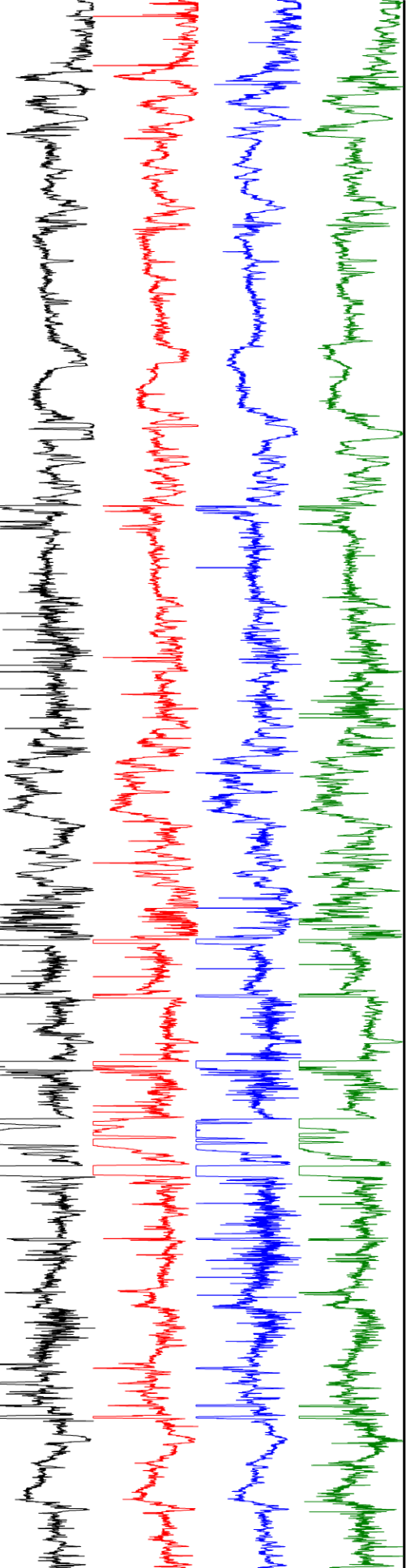
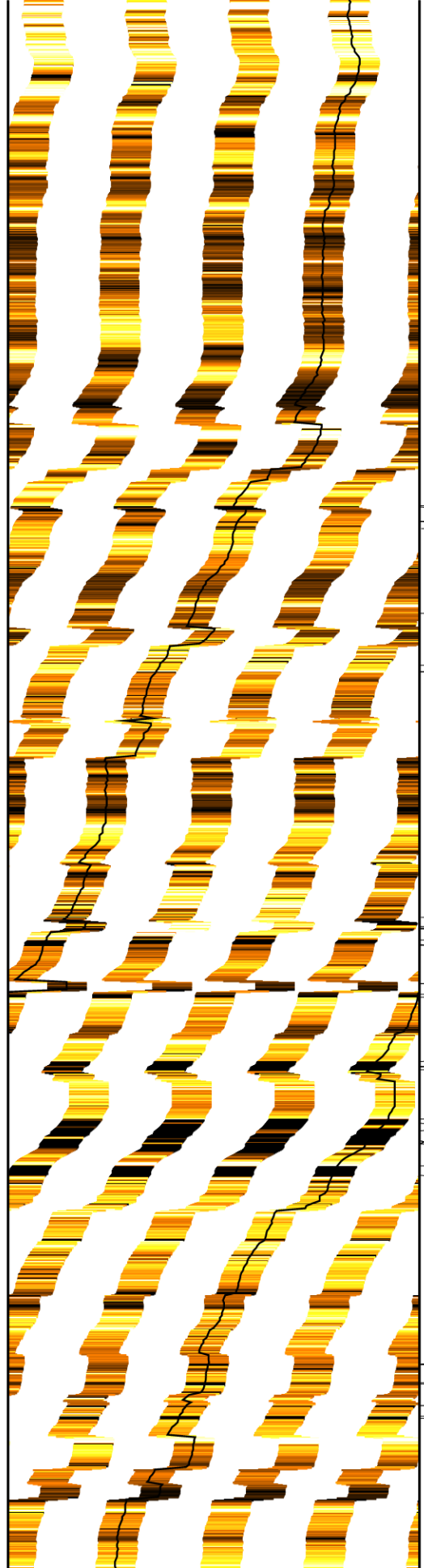
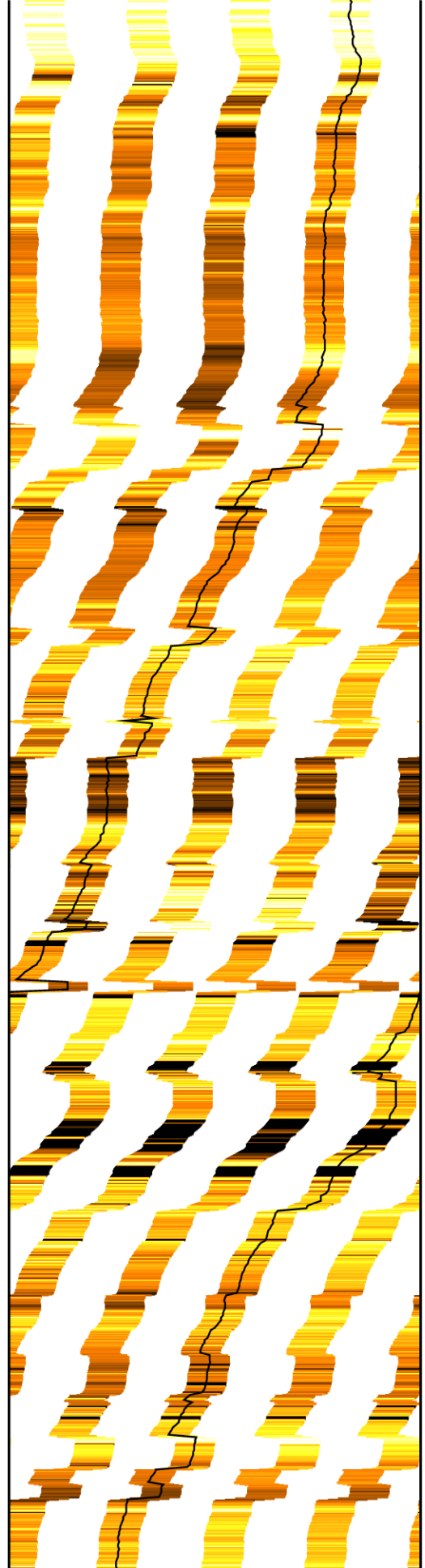
3825

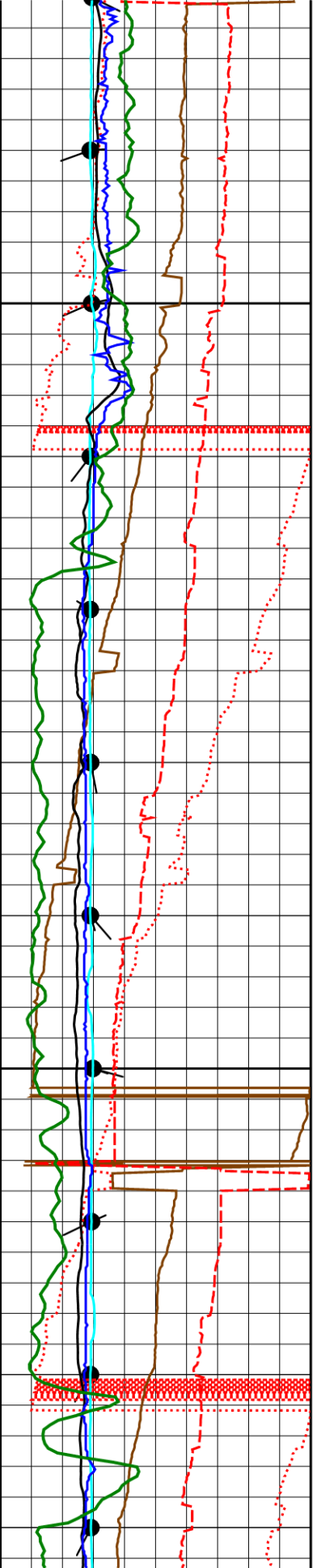




3850

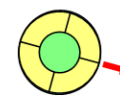
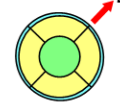
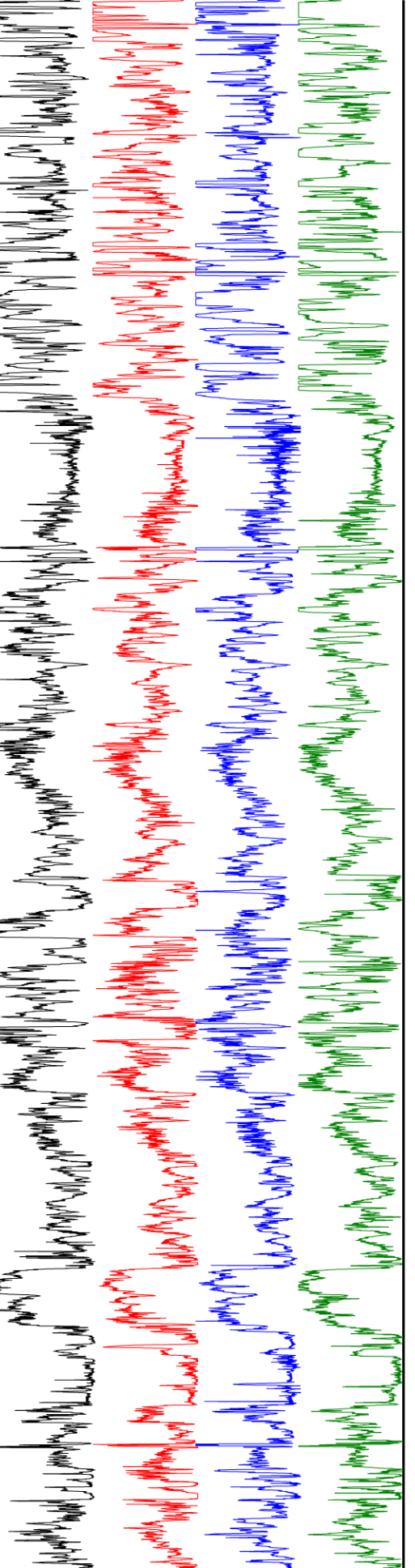
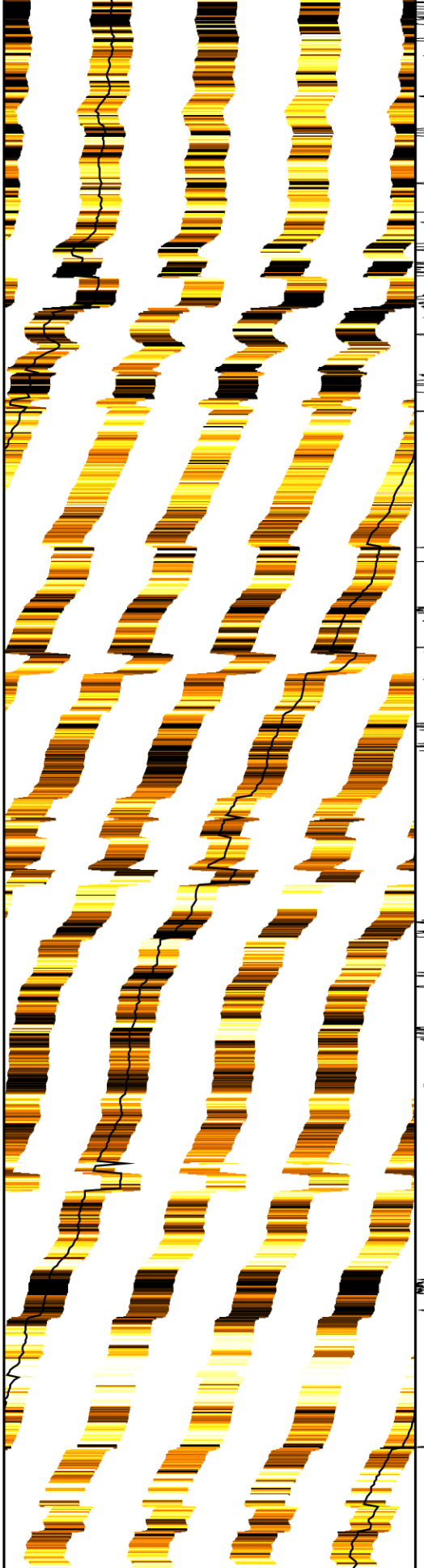
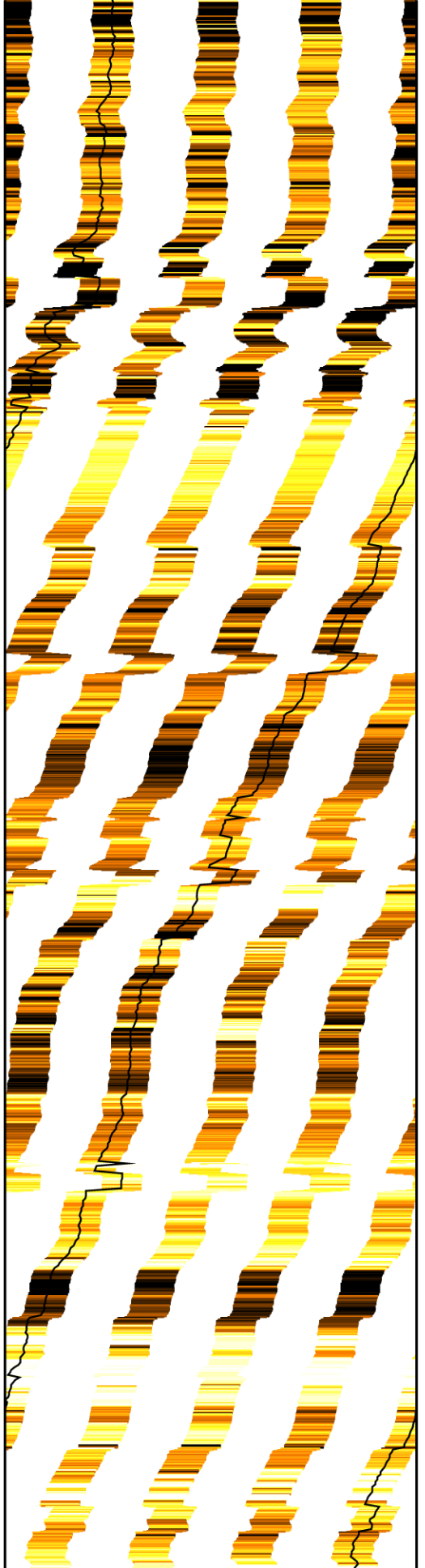
3875

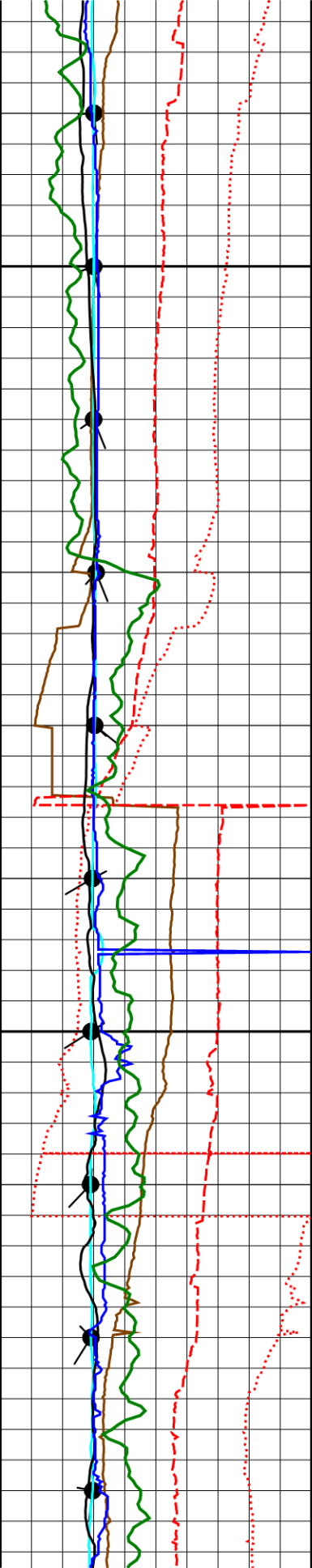




3900

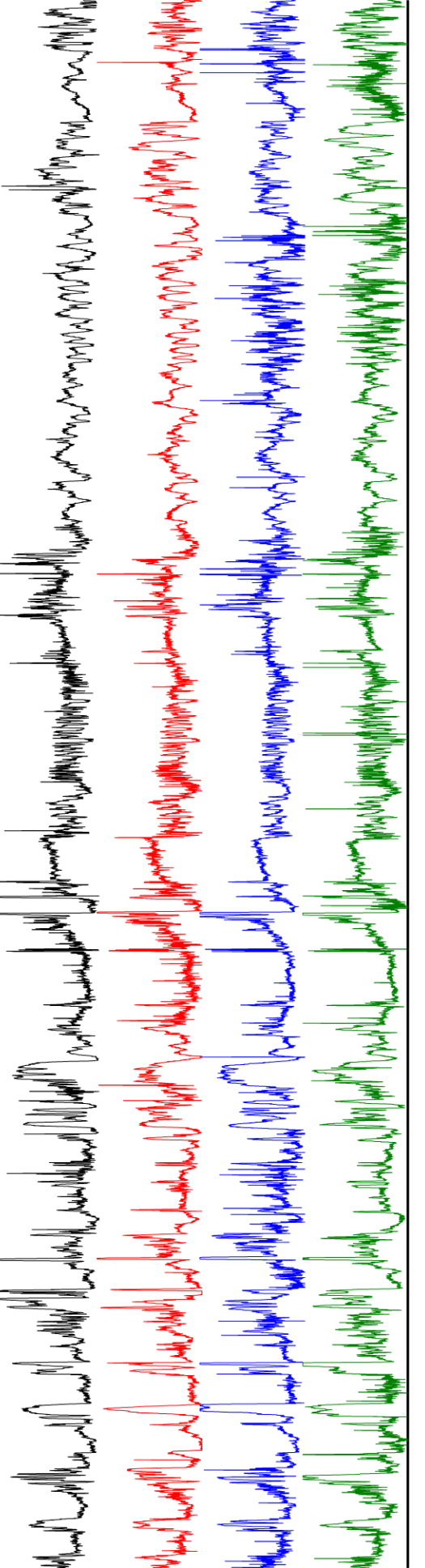
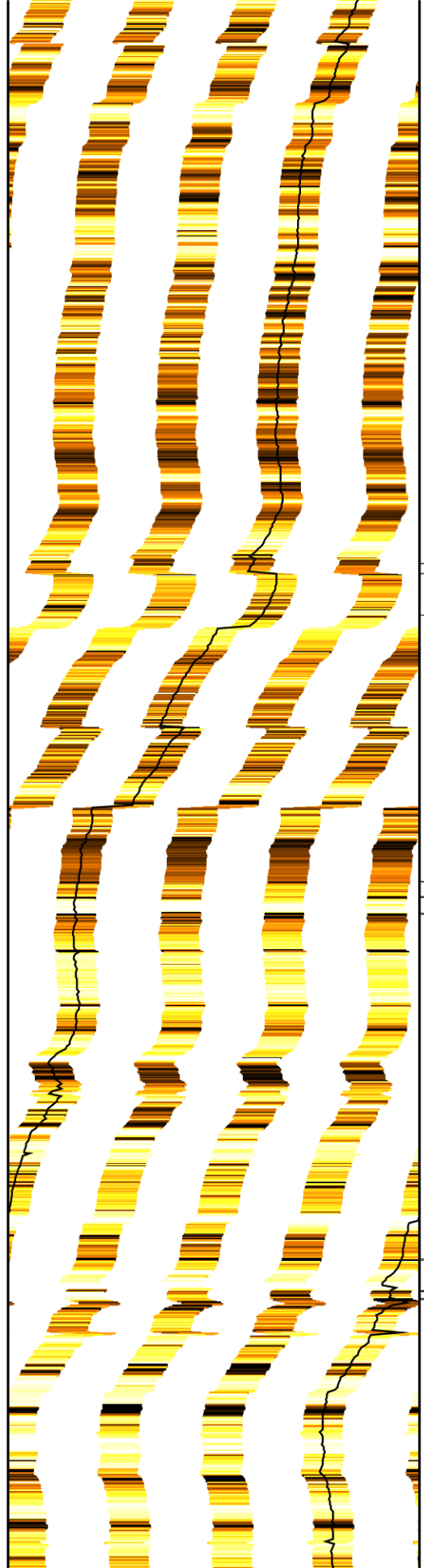
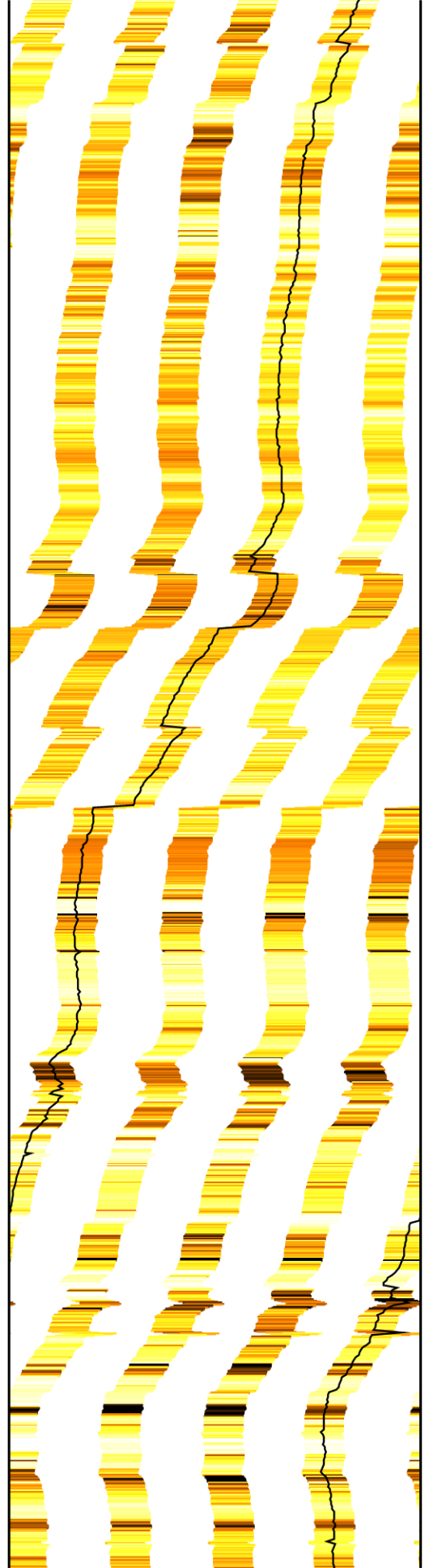
3925



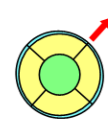
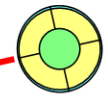


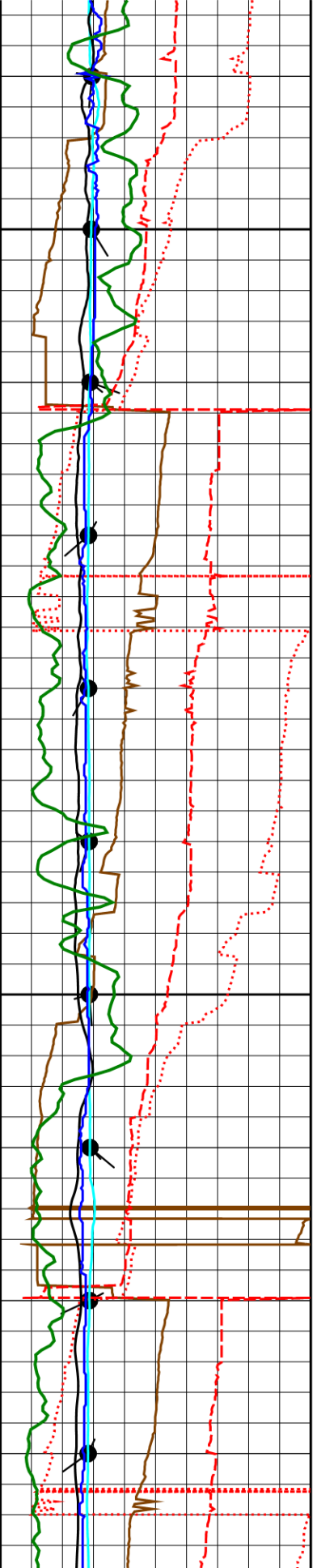
3950

3975



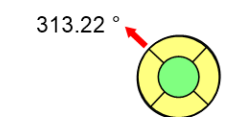
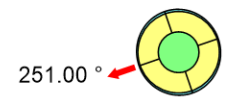
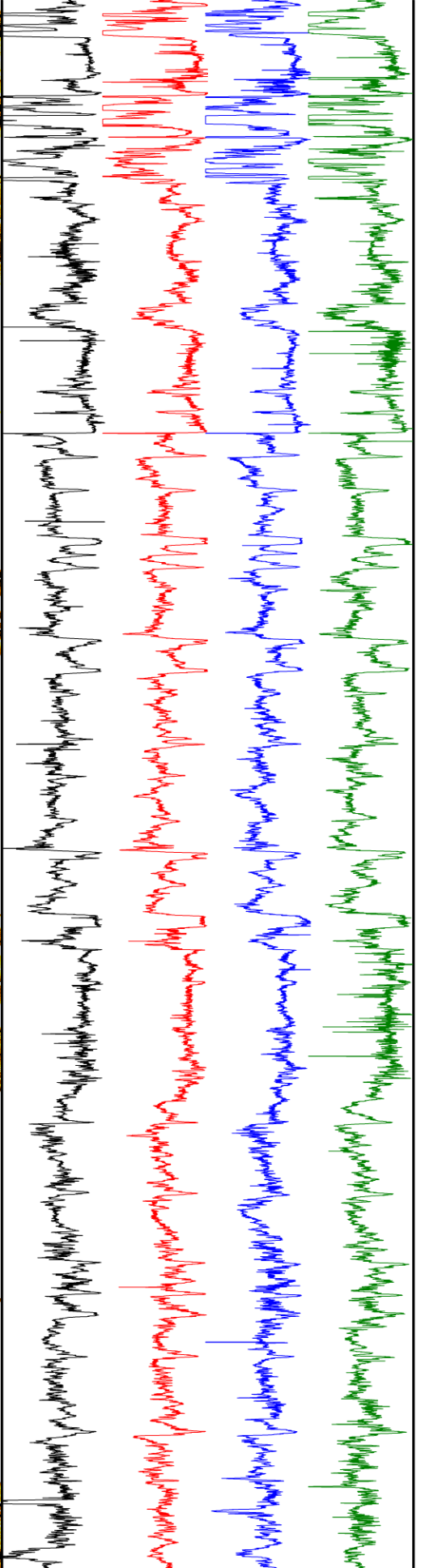
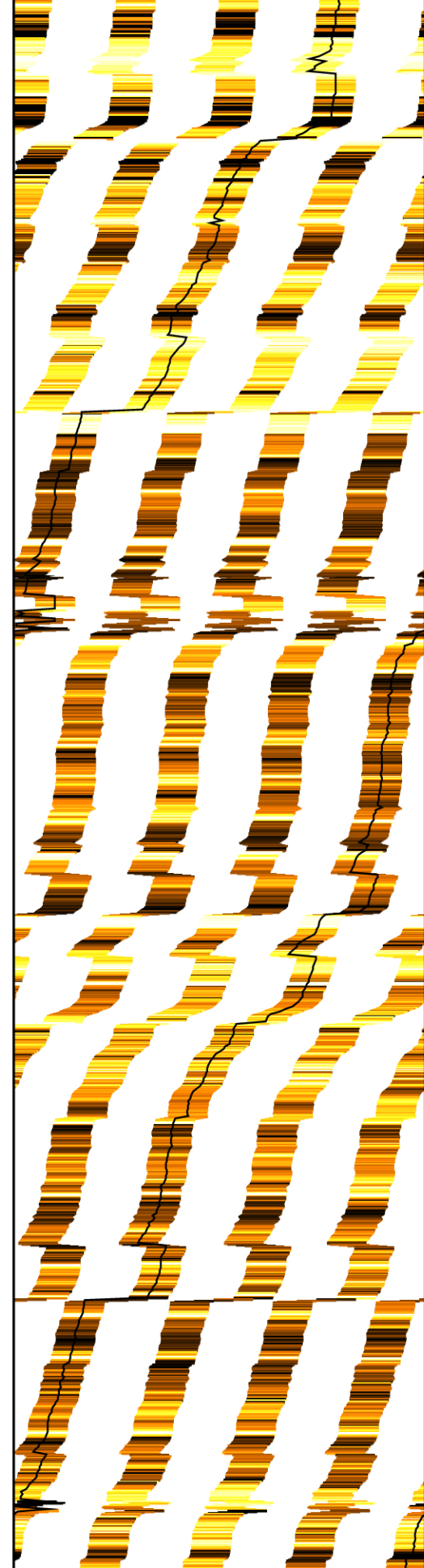
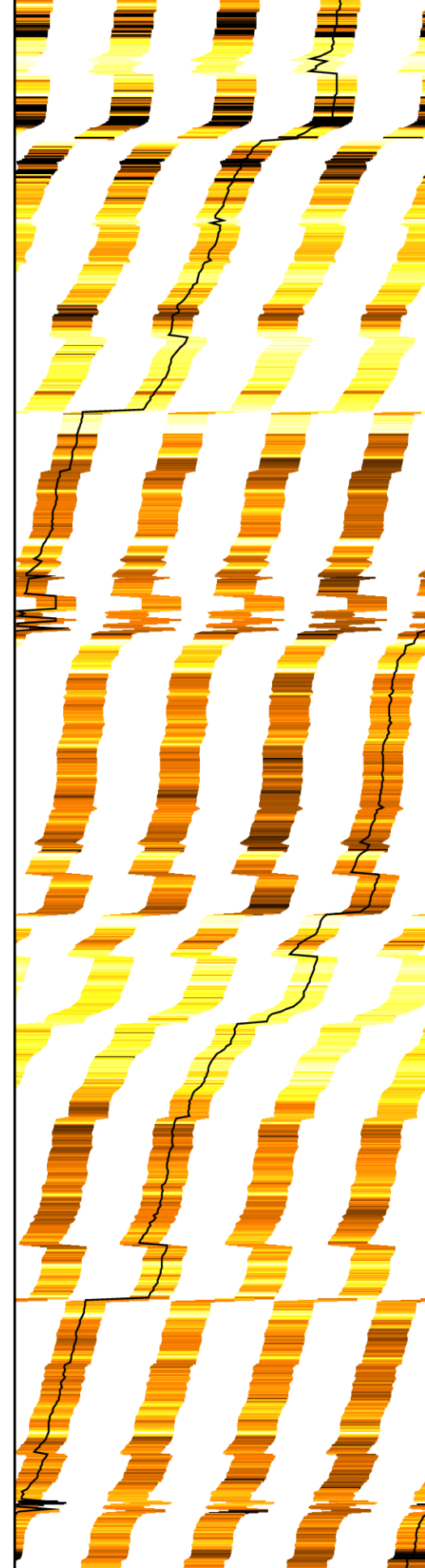
257.39°

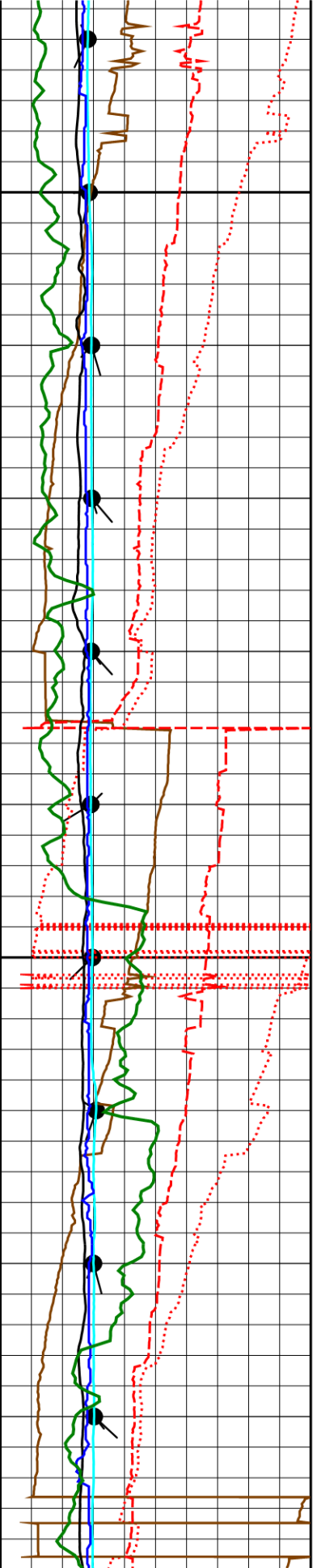




4000

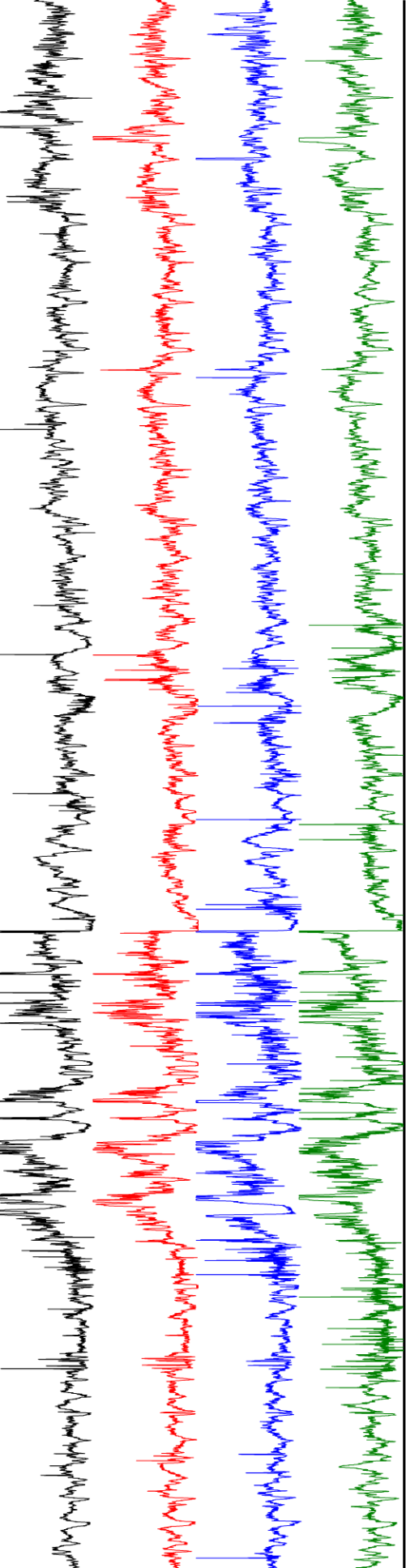
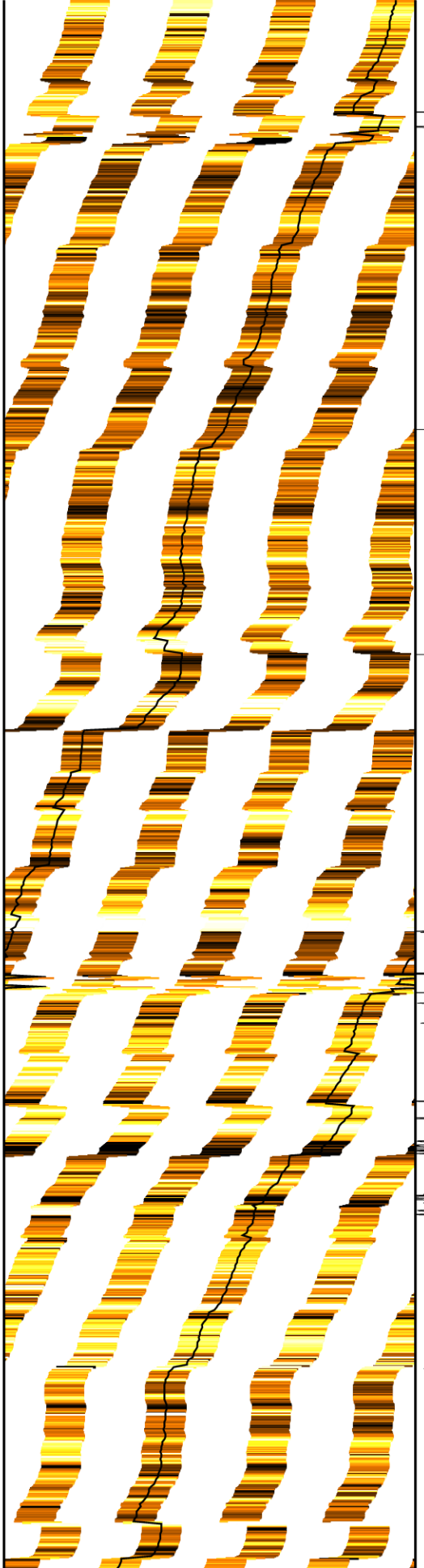
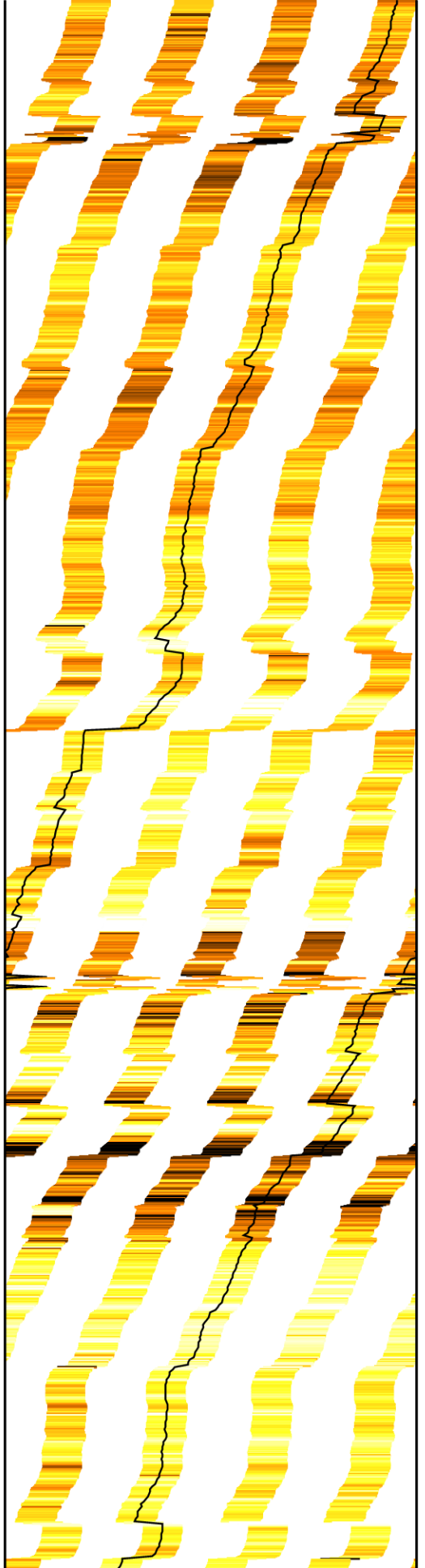
4025





4050

4075

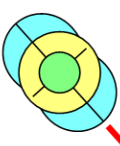
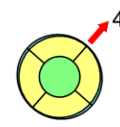
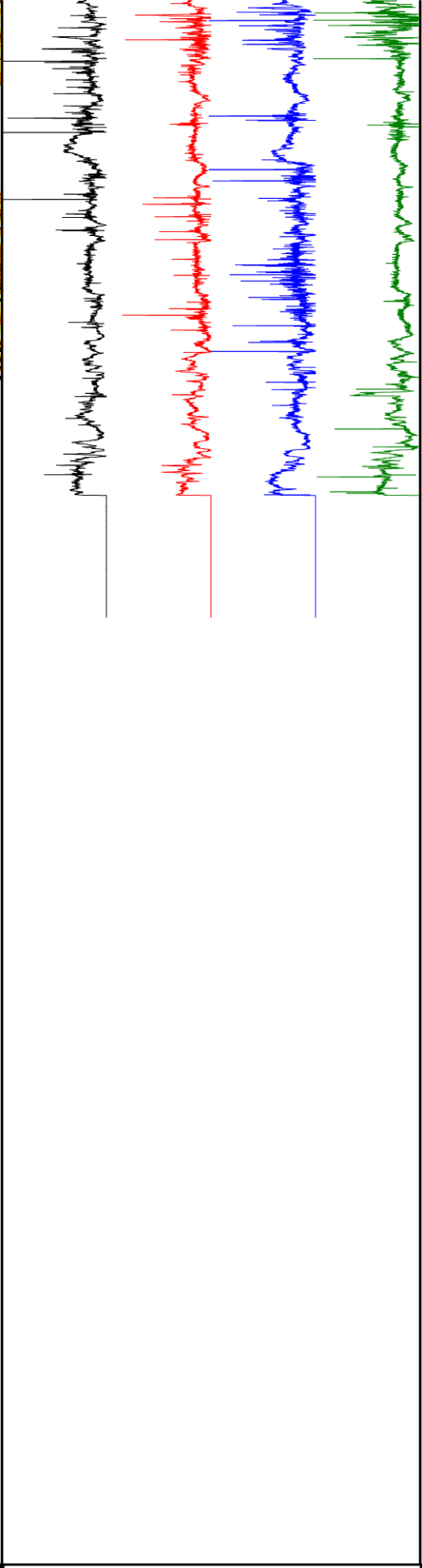
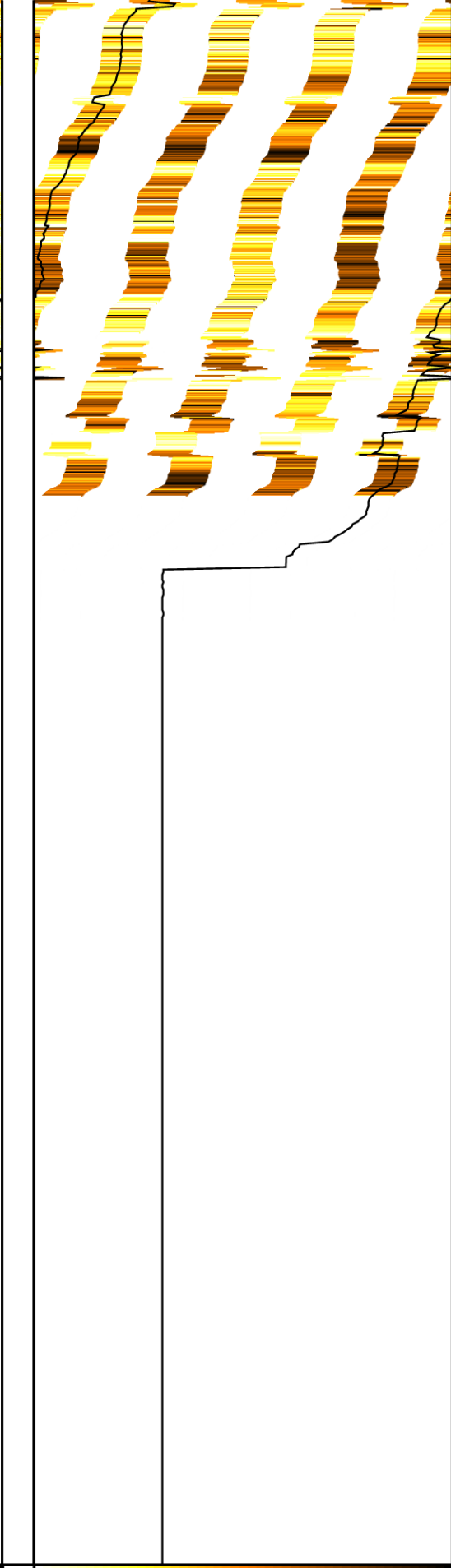
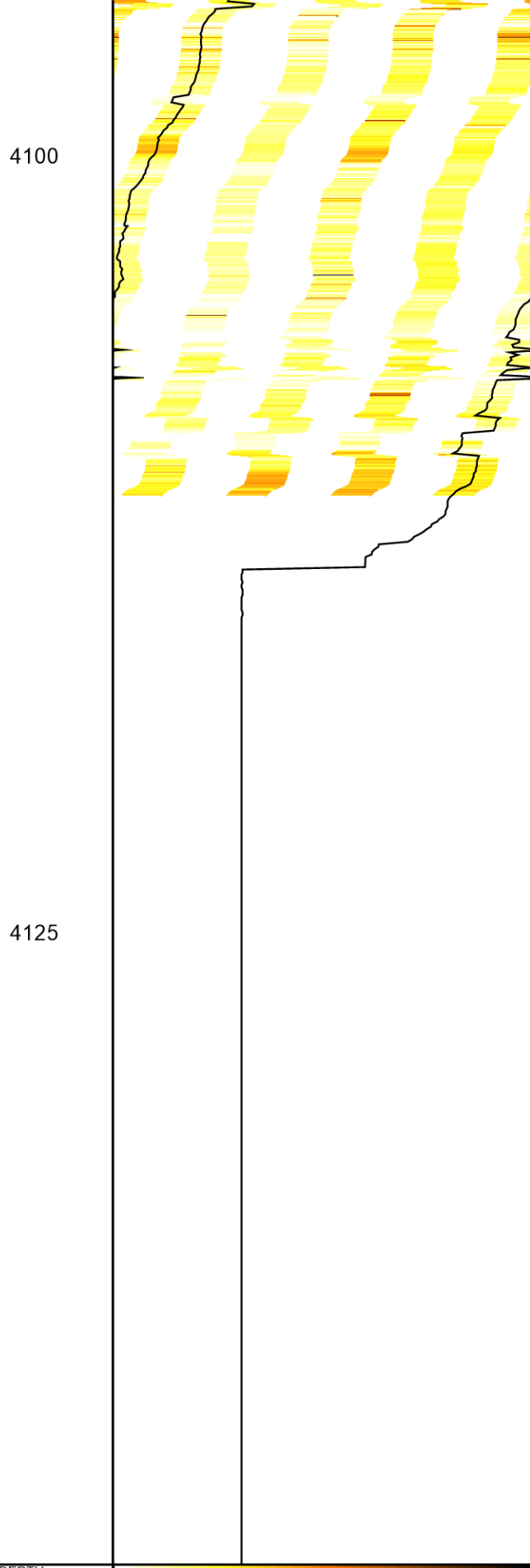
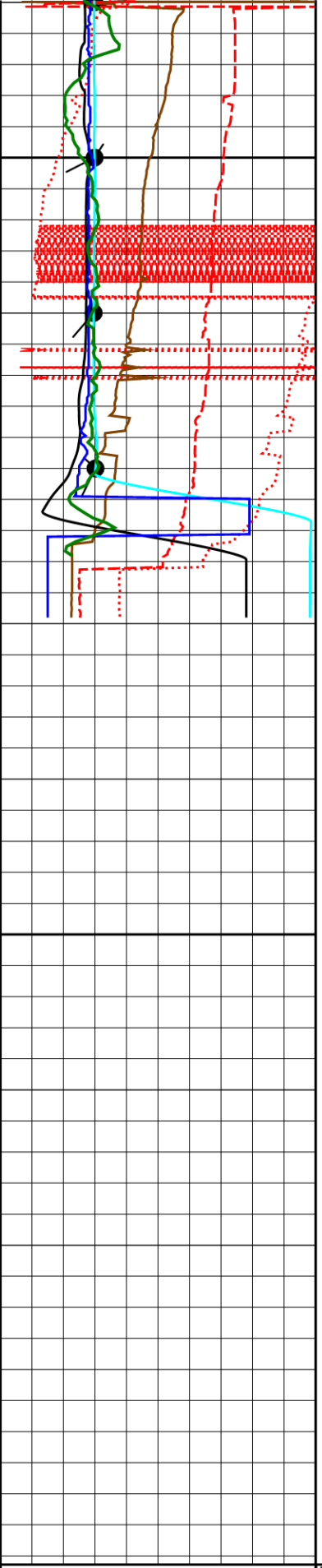


273.97°



305.27°





40.0 P1AZ (DEG) 360.0 DEPTH M

Static

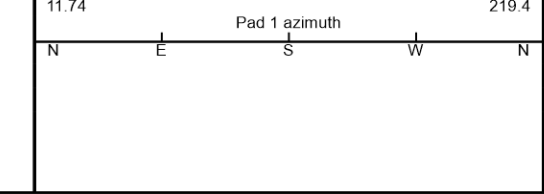
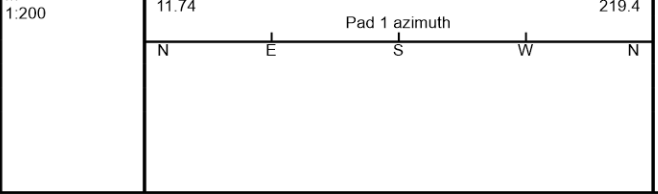
Dynamic

750.0 DB3 -250.0

Breakout



40.0	RB (DEG)	360.0
40.0	HAZI (DEG)	360.0
-1.0	DEVI	9.0
6.0	C13	16.0
6.0	C24	16.0
0.0	GR (GAPI)	200.0
-1.00	Devi-Hazi	9.00



1000.0	DB4	0.0
250.0	DB1	-750.0
500.0	DB2	-500.0

Company  
Well  
Field  
Prov. / State  
Country

BOC of Australia  
Rankin 1  
Wildcat  
Western Australia  
Australia



# HDT STATIC-DYNAMIC-TRACE